



## RL2100 type LEVEL SWITCH

Model/Ref: 101805



*Partnership.  
Without Limits.*

[www.lauridsenindustri.com](http://www.lauridsenindustri.com)

## RL2100 type LEVEL SWITCH

### CHARACTERISTICS

The RL2100 float switch is dedicated to the level control of low pressure liquids tanks at room temperature. It has a brass body and a stainless steel float. The RL2100 is equipped with 2 adjustable reversing switches. Cutting capacity: 250 V – 1.5 A.



### LIMITS OF USE

Max. allowable pressure (PS)	6 bar
Max. allowable temperature (TS)	+120 °C

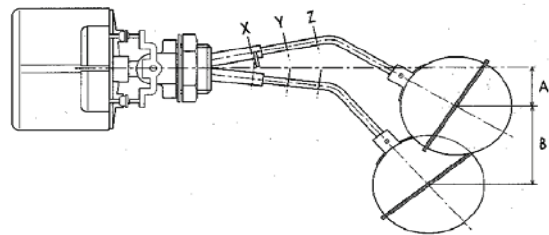
	Inline float		Angle float	
(mm)	A	B	A	B
X	28	56	36	53
Y	32	53	33	57
Z	35	50	33	61

### CONNECTION

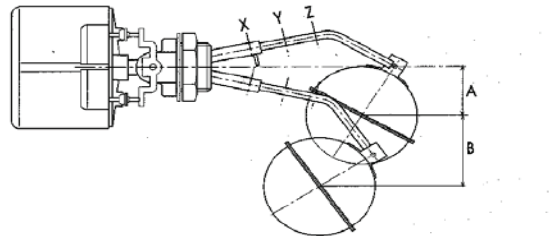
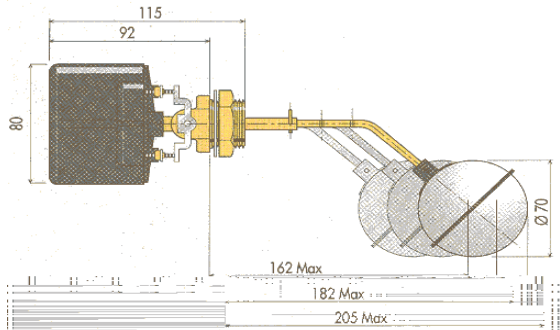
1" BSP threaded connection

### CONSTRUCTION

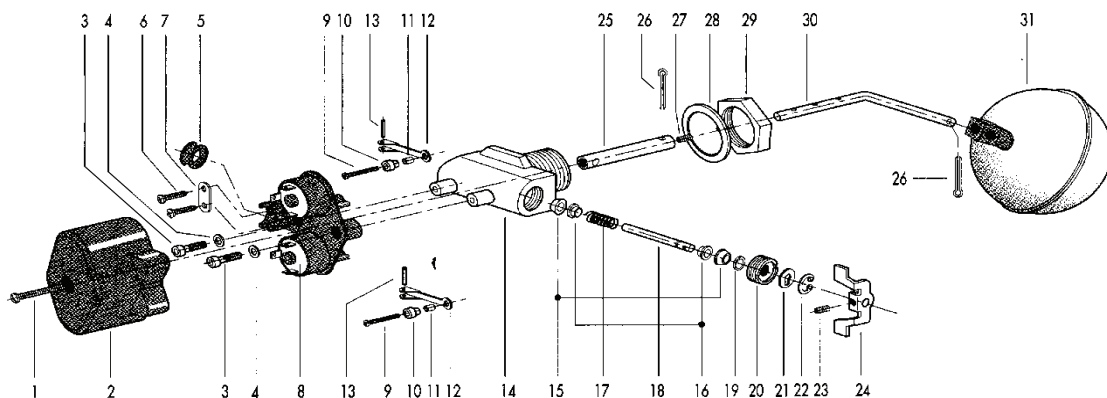
Cover	PBT plastic
Body	Brass
Lever	Brass
Float	AISI 304 stainless steel



### DIMENSIONS



### EXPLODED VIEW



Technical data given for information purpose only. May be subject to alteration without prior notice