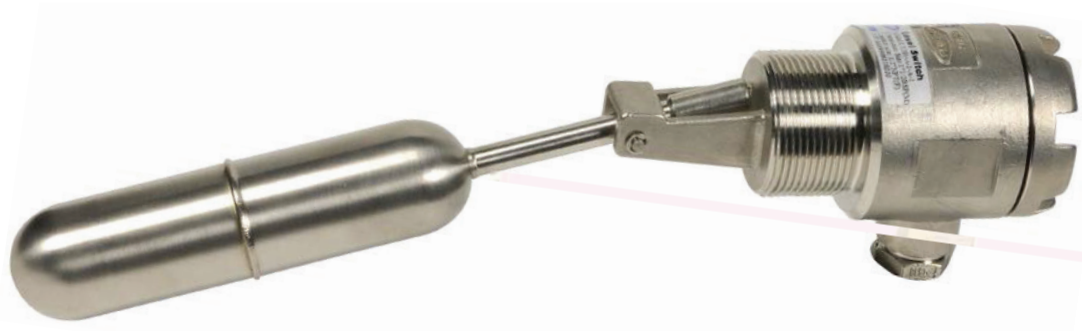




LT201 type STAINLESS STEEL LEVEL SWITCH

Model/Ref: 290106N



*Partnership.  
Without Limits.*

[www.lauridsenindustri.com](http://www.lauridsenindustri.com)

## LT201 type STAINLESS STEEL LEVEL SWITCH

### CHARACTERISTICS

The LT201 level switch is dedicated to the level control of tanks under pressure. The float movement activates a REED switch that permits the start-up or shut-off of a pump, the opening or closing of a solenoid valve or an electric actuator, the activation of an alarm. Horizontal mounting on BSP threaded 1"1/2 tapped installations.

### AVAILABLE ITEMS

1"1/2 BSP connections



### LIMITS OF USE

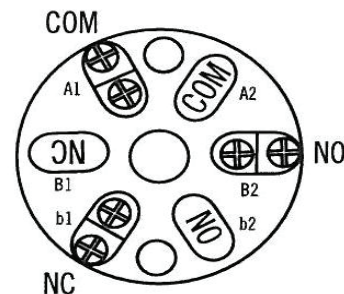
Max. allowable pressure (PS)	30 bar
Min. / Max. allowable temperature (TS)	-20 °C / +150 °C
Min. fluid density	0.7
Protection	IP 65

### CONSTRUCTION

Item	Material
Body	AISI 316 stainless steel
Float	AISI 316 stainless steel
Junction box	AISI 316 stainless steel

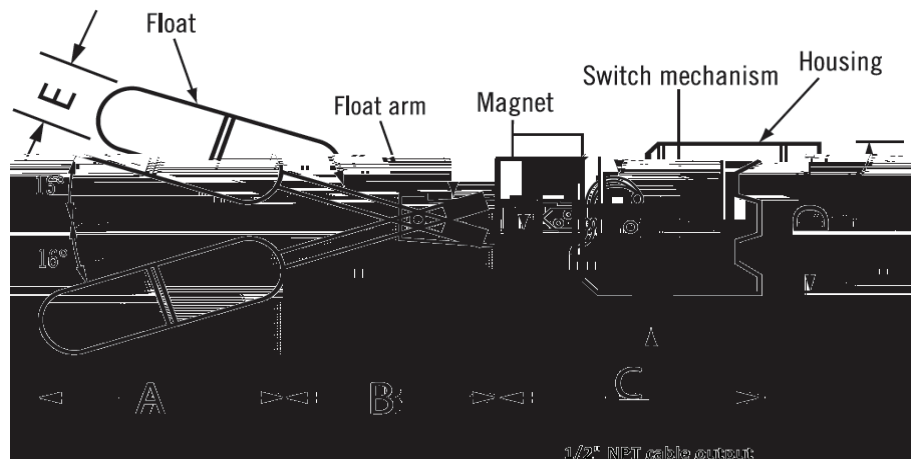
### ELECTRICAL CHARACTERISTICS

Contact form	SPDT
Operation mode	The float closes the NC circuit
Cutting capacity (power)	3 A@250 V AC
	3 A@30 V DC



### DIMENSIONS (mm)

A	150
B	92
C	100
D	64
E	40



Technical data given for information purpose only. May be subject to alteration without prior notice