



## Fittings - 2000-2062

Model/Ref: 2000-2062



*Partnership.  
Without Limits.*

[www.lauridsenindustri.com](http://www.lauridsenindustri.com)

**STAINLESS STEEL FITTINGS PN20**

ISO 9001:2008

BUREAU VERITAS  
Certification



**Size :** DN 1/8" to DN 4"  
**Ends :** Male, female or welding  
**Min Temperature :** - 25°C  
**Max Temperature :** + 180°C  
**Max Pressure :** 20 Bars  
**Specifications :** "Lost wax" moulding  
Threaded BSP

**Materials :** Stainless steel

**STAINLESS STEEL FITTINGS PN20**

**SPECIFICATIONS :**

•  
•  
•

**USE :**

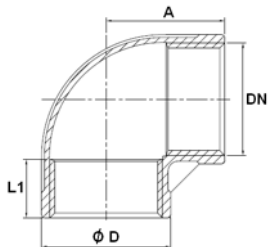
•  
•  
•

**RANGE :**

•  
•

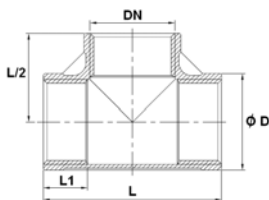
**SIZE ( in mm ) :**

- Elbow 90° F. F. ( DN 1/8"– 4" ) Ref. 2001



DN	1/8"	1/4"	3/8"	1/2"	3/4"	1"	1"1/4	1"1/2	2"	2"1/2	3"	4"
A	17	19	21.5	27	30	35	43	45	54	69	77	92.5
Ø D	13.9	17.4	20.9	24.9	31.2	38.1	47.4	54.1	66.6	82.4	95.9	121.8
L1	6.7	10.2	10.4	13.5	13.9	17.3	18	18.4	19.2	28.9	30.5	33
Weig. (Kg)	0.018	0.029	0.043	0.053	0.079	0.131	0.204	0.263	0.433	0.757	1.083	1.724

- Tee F. F. F. ( DN 1/8"– 4" ) Ref. 2003

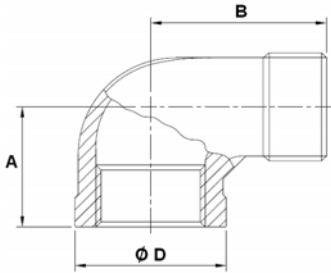


DN	1/8"	1/4"	3/8"	1/2"	3/4"	1"	1"1/4	1"1/2	2"	2"1/2	3"	4"
Ø D	13.9	17.4	20.9	24.9	31.2	38.1	47.4	54.1	66.6	82.4	95.9	121.8
L	34	39	44	55	60	70	85	90	108.5	136	152	182
L1	6.7	10.2	10.4	13.5	13.9	17.3	17.9	18.4	19.2	28.9	30.5	33
Weig. (Kg)	0.026	0.041	0.059	0.073	0.103	0.168	0.260	0.34	0.54	0.878	1.198	2.056

**STAINLESS STEEL FITTINGS PN20**

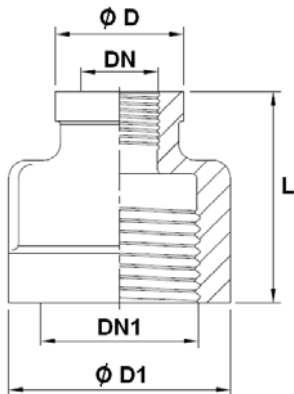
**SIZE ( in mm ) :**

- Elbow 90° M. F. ( DN 1/8"– 3" ) Ref. 2010



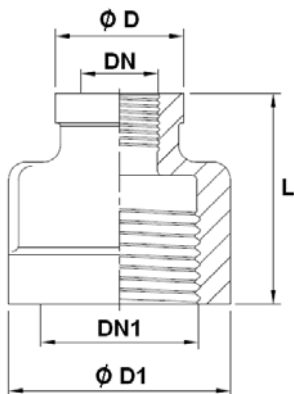
DN	1/8"	1/4"	3/8"	1/2"	3/4"	1"	1"1/4	1"1/2	2"	2"1/2	3"
A	19	21.5	24.5	29	33.5	37	43	47	57.5	66	74
B	26.5	30.8	36.5	41	48	55	62	67	77.5	93	107
Ø D	13.9	17.2	20.9	24.9	31.2	38.1	47.4	54.1	66.6	87.4	101.8
Weig. (Kg)	0.015	0.028	0.043	0.054	0.084	0.139	0.189	0.277	0.412	0.913	1.65

- Reduced nipple F. F. ( DN 1/8"– 2" ) Ref. 2013



DN	1/8"	1/4"	3/8"	1/2"	3/4"	1"	1"1/4	1"1/2
DN1	1/4"	3/8"	1/2"	3/4"	1"	1"1/4	1"1/2	2"
Ø D	15.5	18.2	23	28	34	41.6	50	57
Ø D1	18	22	28.5	34	41.5	50	57	70
L	24	29	34.5	36.5	41.5	47	51.5	59
Weight (Kg)	0.020	0.030	0.066	0.082	0.115	0.186	0.24	0.387

- Double reduced nipple F. F. ( DN 1/8"– 2" ) Ref. 2014

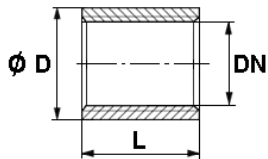


DN	1/8"	1/4"	3/8"	1/2"	3/4"	1"	1"1/4
DN1	3/8"	1/2"	3/4"	1"	1"1/4	1"1/2	2"
Ø D	18.1	19.5	28.2	29	34	41.5	56.5
Ø D1	22	28.5	34	41.5	50	57	70
L	29	34	36.5	42	46	50	59
Weight (Kg)	0.035	0.06	0.092	0.121	0.175	0.235	0.447

**STAINLESS STEEL FITTINGS PN20**

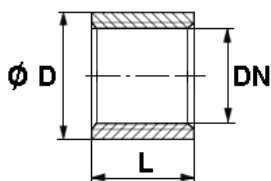
**SIZE ( in mm ) :**

- Socket bright F. F. ( DN 1/8"– 4" ) Ref. 2015



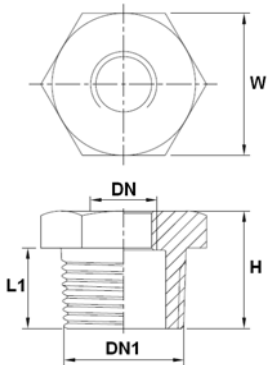
DN	1/8"	1/4"	3/8"	1/2"	3/4"	1"	1"1/4	1"1/2	2"	2"1/2	3"	4"
Ø D	14	18.5	21.5	26.5	32	40	48	55	66	82	95	122
L	17	25	26.5	34	36	43	48	48	56	65	71	83
Weig. (Kg)	0.013	0.031	0.034	0.068	0.084	0.141	0.195	0.235	0.302	0.510	0.670	1.200

- Half socket F. F. ( DN 1/8"– 2" ) Ref. 2017



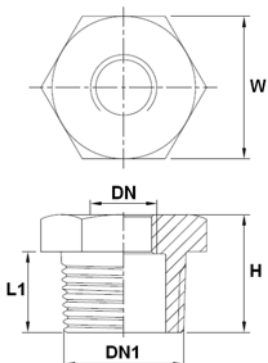
DN	1/8"	1/4"	3/8"	1/2"	3/4"	1"	1"1/4	1"1/2	2"
Ø D	14	19	22	26	32	40	48	55	66
L	10	11	13	16	18	20	22	23	27
Weig. (Kg)	0.008	0.014	0.018	0.029	0.038	0.052	0.086	0.095	0.161

- Reduced nipple M. F. ( DN 1/8"– 2" ) Ref. 2021



DN	1/8"	1/4"	3/8"	1/2"	3/4"	1"	1"1/4	1"1/2
DN1	1/4"	3/8"	1/2"	3/4"	1"	1"1/4	1"1/2	2"
H	17	17.5	22	23	27	30	30	33.5
L1	12.5	13	16	17	20	22	22	23.5
W	17	20	25	30	36.5	45.5	50	62
Weig. (Kg)	0.011	0.017	0.032	0.044	0.072	0.129	0.132	0.262

- Double reduced nipple M. F. ( DN 1/8"– 2" ) Ref. 2024

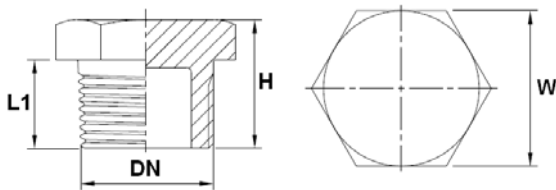


DN	1/8"	1/4"	3/8"	1/2"	3/4"	1"	1"1/4
DN1	3/8"	1/2"	3/4"	1"	1"1/4	1"1/2	2"
H	17.5	22	23	27	30	30	33.5
L1	13	16	17	20	22	22	23.5
W	20	25	30	36.5	45.5	50	62
Weig. (Kg)	0.022	0.036	0.053	0.089	0.158	0.186	0.299

**STAINLESS STEEL FITTINGS PN20**

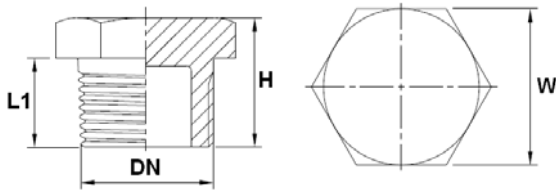
SIZE ( in mm ) :

- Hexagon hollow plug ( DN 1/2"– 2" ) Ref. 2022



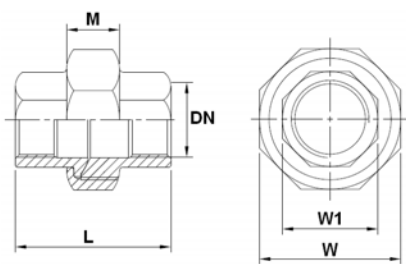
DN	1/2"	3/4"	1"	1"1/4	1"1/2	2"
H	22.6	23.3	26.8	30.5	30.8	34
L1	16	16.5	19	21	21	22.8
W	25.2	29.7	36.5	45.3	51.4	62.5
Weight (Kg)	0.040	0.056	0.087	0.141	0.190	0.280

- Hexagon plain plug ( DN 1/8"– 2" ) Ref. 2023



DN	1/8"	1/4"	3/8"	1/2"	3/4"	1"	1"1/4	1"1/2	2"
H	19	19	19	22	26	28	33	35	39
L1	11	12	13	16	17	19	21	23	27
W	12	16	19	23	28	36	46	50	65
Weig. (Kg)	0.013	0.024	0.036	0.061	0.115	0.198	0.384	0.509	0.913

- Union F.F. ( DN 1/4"– 2" ) Ref. 2025 - Conical seat

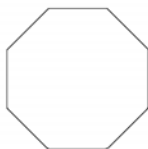


DN	1/4"	3/8"	1/2"	3/4"	1"	1"1/4	1"1/2	2"
L	34.5	37.6	38.6	44	51	58	59	61.5
M	12.2	15	15	15	17	20	20	20.8
W	28	34	39.2	46	55	63.5	71	85
W1	17.5	20.5	26.5	31.2	38	47.5	54	67
Weight (Kg)	0.069	0.098	0.149	0.191	0.299	0.386	0.482	0.716

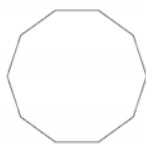
DN 1/4" :



DN 3/8" - 1" :



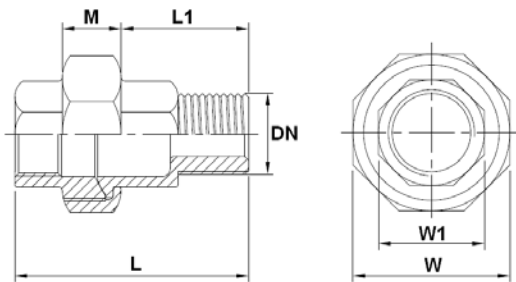
DN 1"1/4 - 2" :



**STAINLESS STEEL FITTINGS PN20**

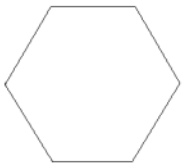
**SIZE ( in mm ) :**

- Union M.F. ( DN 1/4"– 2" ) Ref. 2026 - Conical seat

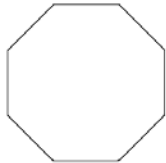


DN	1/4"	3/8"	1/2"	3/4"	1"	1"1/4	1"1/2	2"
L	46	48	52.8	58.6	66.5	73.5	74.5	80.5
L1	22.7	21.5	26	28.6	32.2	35	35	39
M	12.2	15	15	15	17	20	20	20.8
W	28	34	39.2	46	55	63.5	71	85
W1	17.2	20.3	26	30.6	38	47.3	53	66
Weight (Kg)	0.074	0.107	0.164	0.224	0.336	0.443	0.538	0.839

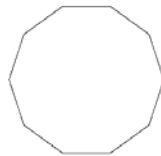
DN 1/4" :



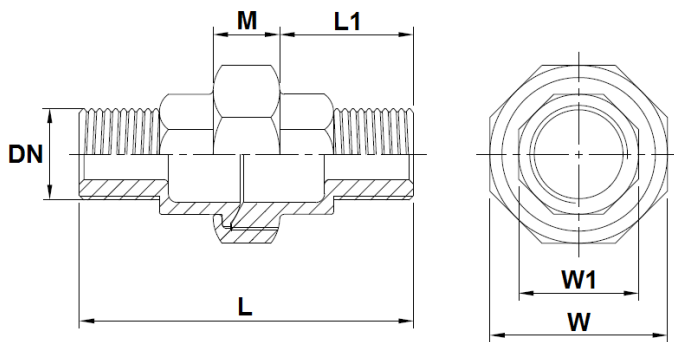
DN 3/8" - 1" :



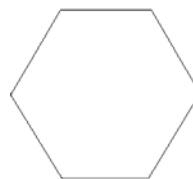
DN 1"1/4 - 2" :



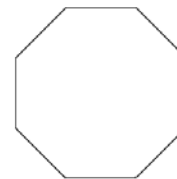
- Union Male - Male ( DN 1/4"– 2" ) Ref. 2062 - Conical seat



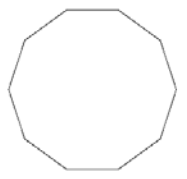
DN 1/4" :



DN 3/8" - 1" :



DN 1"1/4 - 2" :

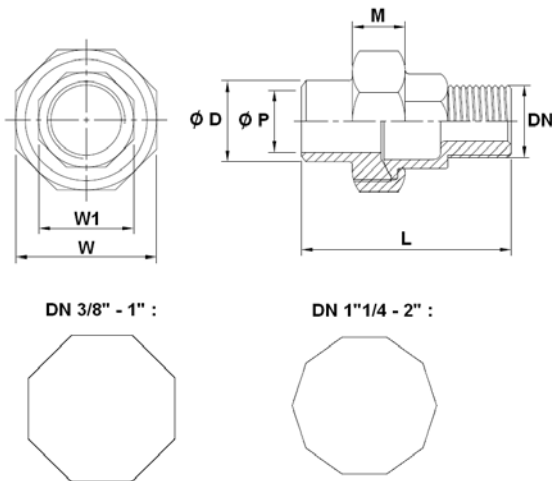


DN	1/4"	3/8"	1/2"	3/4"	1"	1"1/4	1"1/2	2"
L	56	57.5	66.5	73.4	81	89.5	89.3	99
L1	21	21	26.1	29.6	32	34.5	34	39
M	12.2	15	15	15	17	20	20	20.8
W	28	34	39.2	46	55	63.5	71	85
W1	17	20	26.5	31	38.4	47.3	53	66
Weig. (Kg)	0.085	0.112	0.175	0.246	0.358	0.502	0.614	0.946

**STAINLESS STEEL FITTINGS PN20**

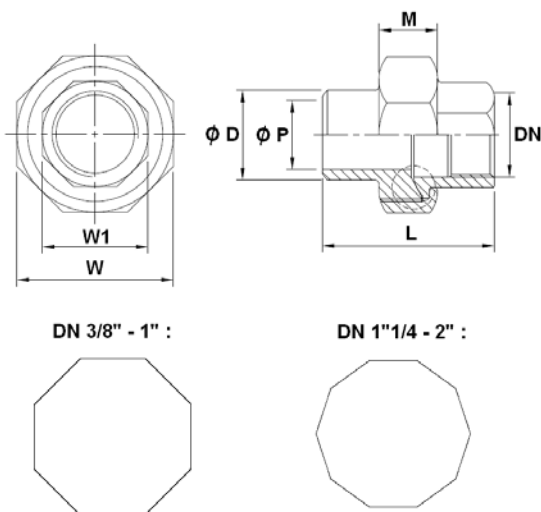
SIZE ( in mm ) :

- Union Male – But Welding ( DN 1/4" – 2" ) Ref. 2027 - Conical seat



DN	1/4"	3/8"	1/2"	3/4"	1"	1 1/4"	1 1/2"	2"
Ø D	13.5	17.2	21.5	27	33.7	42.7	48.5	60.5
Ø P	9.4	12.6	16	21.5	27	35.6	41.5	52.7
L	46.4	47.7	53	60	66	72	73	77.6
M	12.2	15	15	15	17	20	20	20.8
W	28	34	39.2	46	55	63.5	71	85
W1	17.2	20.3	26	30.6	38	47.3	53	66
Weight (Kg)	0.069	0.104	0.153	0.225	0.328	0.432	0.535	0.765

- Union Female – But Welding ( DN 1/4" – 2" ) Ref. 2028 - Conical seat



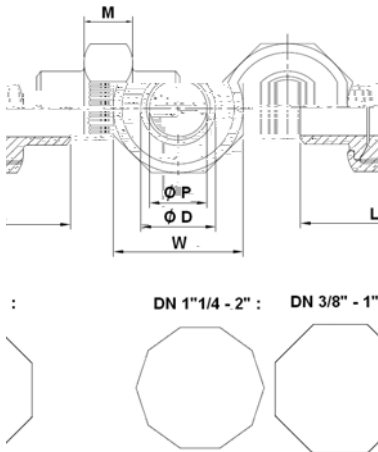
DN	1/4"	3/8"	1/2"	3/4"	1"	1 1/4"	1 1/2"	2"
Ø D	13.5	17.2	21.5	27	33.7	42.7	48.5	60.5
Ø P	9.4	12.6	16	21.5	27	35.6	41.5	52.7
L	35	38	40	45.7	50	56	57	58.6
M	12.2	15	15	15	17	20	20	20.8
W	28	34	39.2	46	55	63.5	71	85
W1	17.4	20.3	26.5	31	38	47.3	53.3	66.5
Weight (Kg)	0.065	0.113	0.145	0.185	0.290	0.395	0.465	0.675



**STAINLESS STEEL FITTINGS PN20**

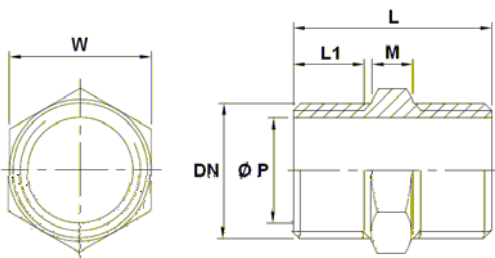
**SIZE ( in mm ) :**

- Union B.W. – B.W. ( DN 8– DN 50 ) Ref. 2029 - Conical seat



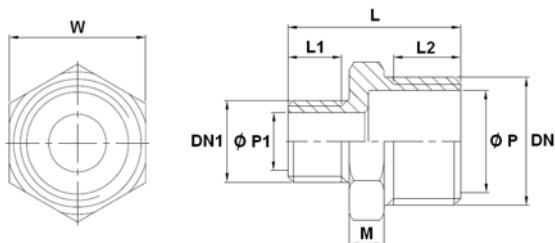
DN	8	10	15	20	25	32	40	50
Ø D	13.5	17.2	21.5	27	33.7	42.7	48.5	60.5
Ø P	9.4	12.6	16	21.5	27	35.6	41.5	52.7
L	34.5	38.5	40	47.5	49.6	54.8	55	57.4
M	12.2	15	15	15	17	20	20	20.8
W	28	34	39.2	46	55	63.5	71	85
Weight (Kg)	0.06	0.107	0.144	0.203	0.310	0.42	0.510	0.765

- Hexagon nipple ( DN 1/8“– 2“ ) Ref. 2030



DN	1/8“	1/4“	3/8“	1/2“	3/4“	1“	1 1/4“	1 1/2“	2“
L	26	30	30	40	40.5	48	49.5	49.5	52.5
L1	9	11	11	14	14	17.5	18	18.5	20
M	5.6	6	6	7.6	8.5	8	9.5	9.5	10.5
Ø P	5.5	8.2	11.8	15.2	21	26.5	35	41	53
W	13	15	18	23	29	35	45	50	62
Weig. (Kg)	0.012	0.019	0.023	0.046	0.062	0.104	0.152	0.169	0.231

- Reduced nipple male - male ( DN 1/8“– 2“ ) Ref. 2031

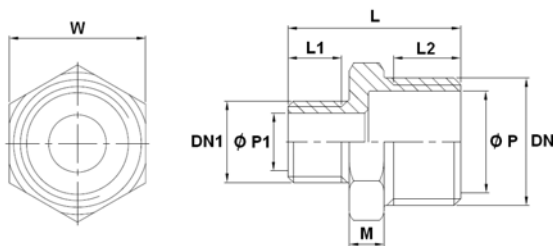


DN	1/4“	3/8“	1/2“	3/4“	1“	1 1/4“	1 1/2“	2“
DN1	1/8“	1/4“	3/8“	1/2“	3/4“	1“	1 1/4“	1 1/2“
L	29	32	36	39	45	50	50.5	52
L1	10	11	12	14	14	17.5	18	18.5
L2	11	12	14	14	17.5	18	18.5	20
M	6	7	7	7	9	10	10.5	11
Ø P	8.2	11.8	15.2	21	27	35	41	51.8
Ø P1	5.5	8.2	11.8	15.2	21	27	35	41
W	15	18	23	29	35	45	50	62
Weight (Kg)	0.016	0.025	0.041	0.057	0.088	0.151	0.184	0.267

**STAINLESS STEEL FITTINGS PN20**

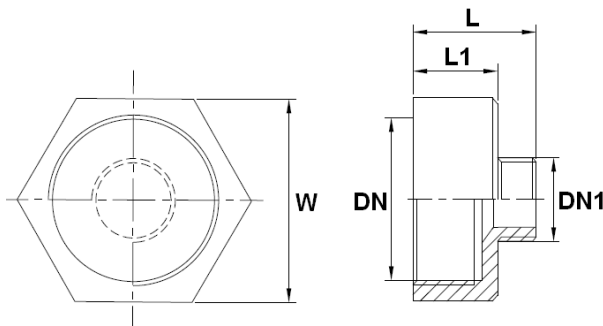
SIZE ( in mm ) :

- Double reduced nipple male - male ( DN 1/8"– 2" ) Ref. 2032



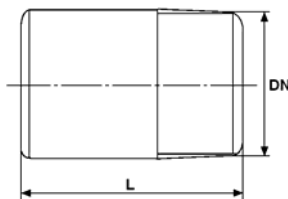
DN	3/8"	1/2"	3/4"	1"	1"1/4"	1"1/2"	2"
DN1	1/8"	1/4"	3/8"	1/2"	3/4"	1"	1"1/4"
L	31	35	36	45	46	50.5	52
L1	10	11	12	14	14	17.5	18
L2	12	14	14	17.5	18	18.5	20
M	7	7	7	9	10	10.5	11
Ø P	11.8	15.2	21	27	35	41	51.8
Ø P1	5.5	8.2	11.8	15.2	21	27	35
W	18	23	29	35	45	50	62
Weight (Kg)	0.022	0.039	0.051	0.093	0.143	0.187	0.281

- Reduced nipple female - male ( DN 1/8"– 2" ) Ref. 2033



DN	1/4"	3/8"	1/2"	3/4"	1"	1"1/4"	1"1/2"	2"
DN1	1/8"	1/4"	3/8"	1/2"	3/4"	1"	1"1/4"	1"1/2"
L	27	31	35	38.5	44	47	50	53
L1	16.5	18.5	22	23	26	27	28	30
W	17	21	26	32	38	46	54	63
Weig. (Kg)	0.024	0.039	0.068	0.104	0.127	0.170	0.265	0.290

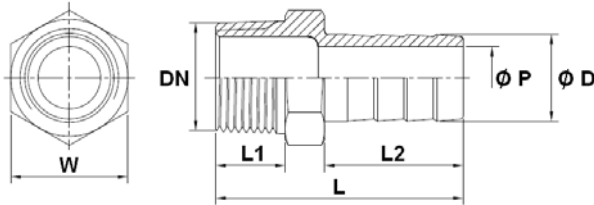
- Welding nipple L=50 mm ( DN 1/4"– 2" ) Ref. 2034



DN	1/4"	3/8"	1/2"	3/4"	1"	1"1/4"	1"1/2"	2"
L	50	50	50	50	50	50	50	50
Weig. (Kg)	0.025	0.039	0.058	0.079	0.093	0.135	0.16	0.215

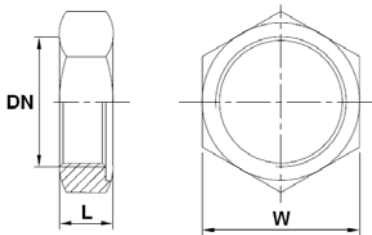
**STAINLESS STEEL FITTINGS PN20**
**SIZE ( in mm ) :**

- Hose nozzle ( DN 1/4"– 2" ) Ref. 2035



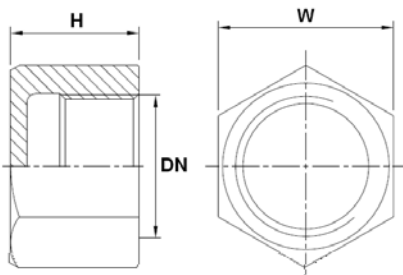
DN	1/4"	3/8"	1/2"	3/4"	1"	1"1/4	1"1/2	2"
L	43	49	56.5	60	69	70	80	88
L1	11.5	13	15	15.5	19	22	22	22.5
L2	25	29.5	33	34	39	37	47.5	53.5
Ø D	8	10	13	20	25	32	40	51.5
Ø P	4	5	7	15	19.5	26.5	33.5	44
W	15	19	23	28	37	45	50	62
Weig. (Kg)	0.020	0.034	0.055	0.084	0.133	0.196	0.286	0.44

- Hexagon nut ( DN 1/8"– 2" ) Ref. 2036



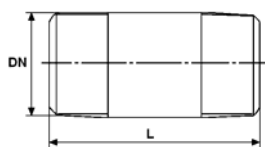
DN	1/8"	1/4"	3/8"	1/2"	3/4"	1"	1"1/4	1"1/2	2"
L	6.3	7	7.5	7.7	9.2	9	11.7	11.8	13.1
W	17.3	19.1	25.3	30.1	34.4	43.2	52	58.1	71.9
Weig. (Kg)	0.008	0.009	0.018	0.024	0.032	0.048	0.086	0.097	0.155

- Female hexagon cap ( DN 1/4"– 2" ) Ref. 2037



DN	1/4"	3/8"	1/2"	3/4"	1"	1"1/4	1"1/2	2"
H	17	17.5	20	20.4	27.1	30	30.3	32.3
W	17.5	21.2	25.5	30.1	37.4	47	53.2	66
Weight (Kg)	0.022	0.031	0.042	0.051	0.095	0.153	0.188	0.304

- Barrel nipple L=100 mm ( DN 1/4"– 2" ) Ref. 2038

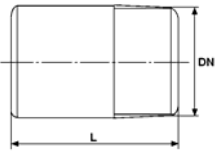


DN	1/4"	3/8"	1/2"	3/4"	1"	1"1/4	1"1/2	2"
L	100	100	100	100	100	100	100	100
Weight (Kg)	0.051	0.063	0.105	0.127	0.185	0.229	0.262	0.39

**STAINLESS STEEL FITTINGS PN20**

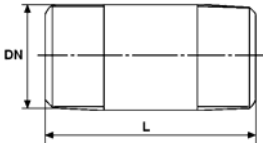
SIZE ( in mm ) :

- Standard welding nipple ( DN 1/4"– 4" ) Ref. 2039



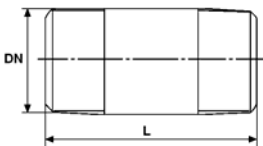
DN	1/4"	3/8"	1/2"	3/4"	1"	1"1/4"	1"1/2"	2"	2"1/2"	3"	4"
L	22	23	27	33	35	36	41	46	55	70	80
Weig. (Kg)	0.010	0.013	0.025	0.037	0.061	0.074	0.106	0.160	0.256	0.461	0.745

- Standard barrel nipple ( DN 1/4"– 4" ) Ref. 2040



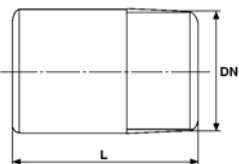
DN	1/4"	3/8"	1/2"	3/4"	1"	1"1/4"	1"1/2"	2"	2"1/2"	3"	4"
L	40	40	60	60	60	80	80	100	100	120	120
Weig. (Kg)	0.019	0.022	0.058	0.066	0.1	0.178	0.193	0.390	0.438	0.753	1.043

- Barrel nipple L=200 mm ( DN 1/4"– 2" ) Ref. 2041



DN	1/4"	3/8"	1/2"	3/4"	1"	1"1/4"	1"1/2"	2"
L	200	200	200	200	200	200	200	200
Weight (Kg)	0.102	0.126	0.210	0.254	0.370	0.458	0.524	0.780

- Welding nipple L=100 mm ( DN 1/4"– 2" ) Ref. 2042



DN	1/4"	3/8"	1/2"	3/4"	1"	1"1/4"	1"1/2"	2"
L	100	100	100	100	100	100	100	100
Weight (Kg)	0.050	0.078	0.116	0.158	0.186	0.270	0.32	0.430

**STAINLESS STEEL FITTINGS PN20****STANDARDS :**

- 
- 
- 
- 
- 
- 
- 

This information is given informally. It can be modified at any time