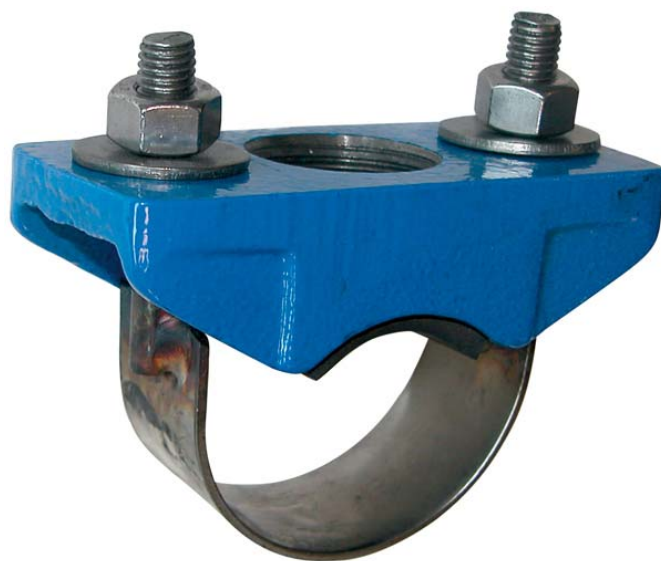




TAPPING SADDLE

Model/Ref: 1190



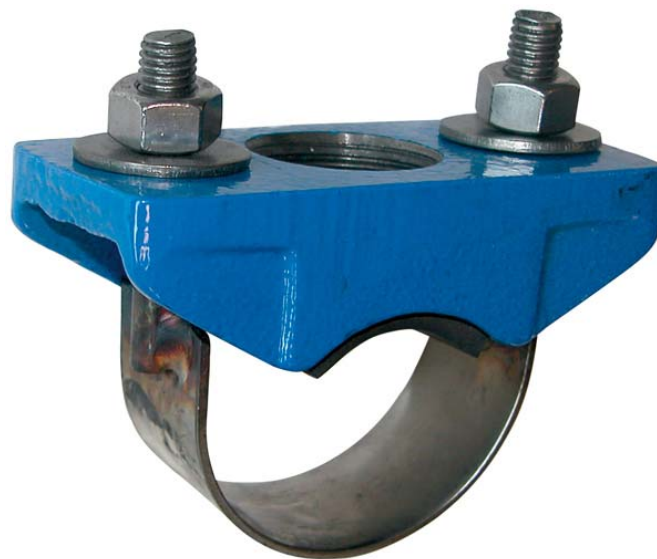
*Partnership.
Without Limits.*

www.lauridsenindustri.dk

TAPPING SADDLE

ISO 9001:2008

BUREAU VERITAS
Certification



Size : DN 30 to DN 150
Ends : Female BSP
Min Temperature : - 10°C
Max Temperature : + 60°C
Max Pressure : 10 Bars
Specifications : EPDM glued gasket
SS 304 stirrup and bolting
For steel, cast iron, PE, and PVC pipes

Materials : Ductile iron EN GJS-400-15 saddle

TAPPING SADDLE
SPECIFICATIONS :

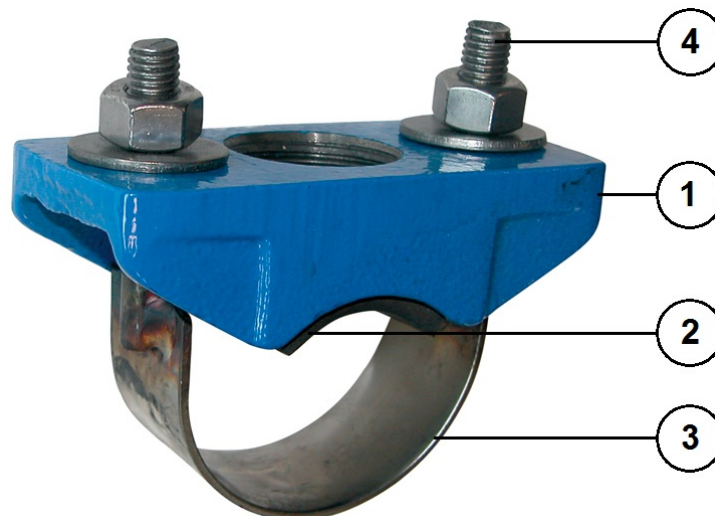
- Ductile iron saddle
- Glued EPDM gasket
- SS 304 stirrup and bolting
- For steel, cast iron, PE and PVC pipes

USE :

- Water distribution
- Min and max Temperature Ts : - 10°C to + 60°C
- Max Pressure PN : 10 bars

RANGE :

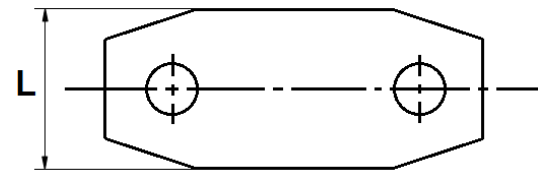
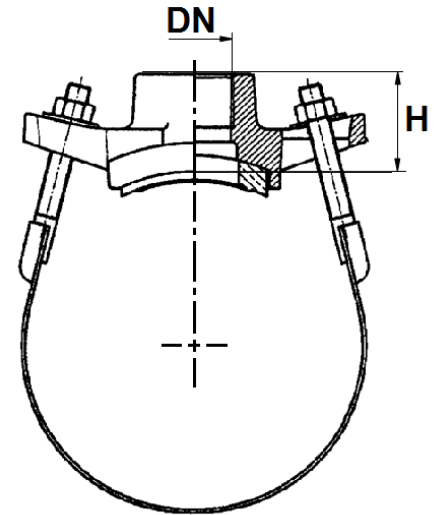
- Ductile iron saddle **Ref.1190** from DN 1/2"-DN30 to DN 3"-DN150

MATERIALS :


Item	Designation	Materials
1	Body	Ductile iron EN GJS-400-15
2	Gasket	EPDM
3	Stirrup	SS 304
4	Bolting	SS 304

TAPPING SADDLE
SIZE (in mm) :

DN	DN Tube	Ø mini	Ø maxi	H	L	Weight (kg)
1/2"	30	40	50	16	48	0,50
3/4"	30	40	50	16	48	0,40
3/4"	40	48	55	22	52	0,70
1"	40	48	55	22	52	0,70
3/4"	50	60	68	32	67	0,70
1"	50	60	68	32	67	0,70
1" 1/4	50	60	68	27	67	1,20
1" 1/2	50	60	68	27	67	1,10
3/4"	65	72	80	38	79	1,30
1"	65	72	80	38	79	1,30
1" 1/4	65	72	80	43	79	1,60
1" 1/2	65	72	80	43	79	1,50
3/4"	70	76	84	45	70	1,30
1"	70	76	84	45	70	1,20
1" 1/4	70	76	84	48	81	1,60
1" 1/2	70	76	84	48	81	1,50
3/4"	80	88	104	45	78	1,60
1"	80	88	104	45	78	1,50
1" 1/4	80	88	104	40	88	1,80
1" 1/2	80	88	104	40	88	1,70
2"	80	88	104	45	92	1,80
3/4"	90	98	112	55	76	1,70
1"	90	98	112	55	76	1,60
1" 1/4	90	98	112	50	90	1,90
1" 1/2	90	98	112	50	90	1,80
3/4"	100	112	126	55	76	1,70
1"	100	112	126	55	76	1,60
1" 1/4	100	112	126	50	90	1,90
1" 1/2	100	112	126	50	90	1,80
2"	100	112	126	49	98	2,00
3/4"	125	140	154	50	76	1,70
1"	125	140	154	50	76	1,60
1" 1/4	125	140	154	53	88	2,10
1" 1/2	125	140	154	53	88	1,90
2"	125	140	154	57	97	2,30
3/4"	150	168	184	50	76	1,70
1"	150	168	184	50	76	1,60
1" 1/4	150	168	184	53	88	2,10
1" 1/2	150	168	184	53	88	2,00
2"	150	168	184	57	97	2,40
2" 1/2	150	168	184	46	120	3,30
3"	150	168	184	46	120	2,90



TAPPING SADDLE**STANDARDS :**

- Fabrication according to ISO 9001 : 2008
- Directive 97/23/CE : Products excluded from directive (Article 1, § 3.2)
- Cylindrical BSP threaded ends according to UNI ISO 228-1

ADVICE :Our opinion and our advice are not guaranteed and Lauridsen Industri shall not be liable for the consequences of damages.

The customer must check the right choice of the products with the real service conditions.