



SPU225X type ATEX SERVO-OPERATED STAINLESS STEEL SOLENOID VALVE

Model/Ref: 080101



*Partnership.
Without Limits.*

www.lauridsenindustri.dk

**SPU225X type ATEX SERVO-OPERATED
STAINLESS STEEL SOLENOID VALVE**

CHARACTERISTICS

The SPU225X is a 2/2-way stainless steel servo-operated stainless steel solenoid valve. It is dedicated to the automatic shut-off of unloaded aggressive fluid lines in explosive zones 1, 2, 21 and 22. It has a normally closed (NC) operation and a minimum up/downstream pressure differential of 0.5 bar. It has a standard construction with stainless steel body and internal parts and FKM diaphragm. This solenoid valve is available in 230 V and 24 V AC versions. The coil is delivered with a 3 m connection cable. It is manufactured according to ISO 9001.

AVAILABLE ITEMS

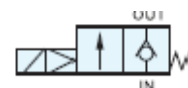
BSP threaded connections: 3/8" to 2"
Voltage 230V, 24V AC and 24V DC

LIMITS OF USE

Electrical protection	IP65
Explosion protection zones	1, 2, 21 and 22
Fluid PS	10 bar
Minimum ΔP	0.5 bar
Maximum fluid viscosity	50 Cst
Fluid TS	-10°C / +90°C
Room TS	-20°C / +50°C

FLOW RATES

Ø	Bore (mm)	Kv (m ³ /h.)	ΔP min. (bar)	PS (bar)	Operating time
3/8"	13	2.82	0.5	10	20-60 ms
1/2"	13	2.82	0.5	10	20-60 ms
3/4"	25	7.5	0.5	10	20-60 ms
1"	25	7.5	0.5	10	20-60 ms
1"1/4"	38	13.7	0.5	10	50-80 ms
1"1/2"	38	18.7	0.5	10	50-80 ms
2"	50	30.0	0.5	10	50-80 ms



Technical data given for information purpose only. May be subject to alteration without prior notice

SPU225X type ATEX SERVO-OPERATED STAINLESS STEEL SOLENOID VALVE

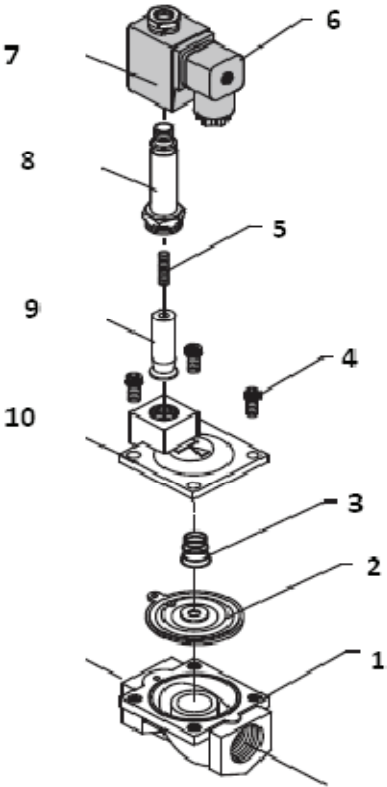
ELECTRICAL CHARACTERISTICS

Coil class F, 100% service, connection with a 3 wire cable of 3 meters.

Current	Voltage		Frequency		Power
Alternating	24	230	50 Hz	60 Hz	8.5 VA
Direct	24				10 W

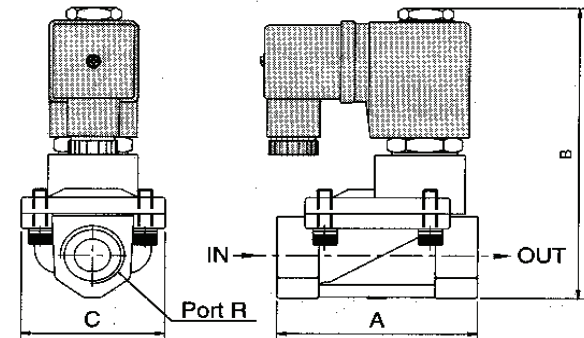
CONSTRUCTION

#	Item	Material
1	Body	Stainless steel A351 CF8M / 1.4408
2	Diaphragm	FKM
3	Spring	Alloy steel
4	Screw	Stainless steel F304 / 1.4301
5	Spring	Alloy steel
6	Connector	Plastic
7	Coil	PBT +30% GF
8	Standpipe	Stainless steel F304 / 1.4301
9	Core	Stainless steel F304 / 1.4301
10	Cover	Stainless steel A351 CF8M / 1.4408



DIMENSIONS (mm)

DN	A	B	C	Weight (kg)
3/8"	66.5	106.5	48	0.74
1/2"	66.5	106.5	48	0.72
3/4"	96	126	70	1.43
1"	96	126	70	1.43
1"1/4	131	145.5	96	2.56
1"1/2	131	145.5	96	2.32
2"	174	145	145	3.44



STANDARDS AND CERTIFICATIONS

Standard	
97/23/EC Pressure Equipment Directive	3/8" to 1": excluded 1"1/4 to 2": category I
Shell design	EN 12516-1
Alloy grade	EN 1503-1
ATEX Directive	Category II
Body: II 2 G/D EEx c II T4	SIRA 09 ATEX 6180 X
Coil: II 2 G/D EEx m II T4	PTB 03 ATEX 2086X

Technical data given for information purpose only. May be subject to alteration without prior notice

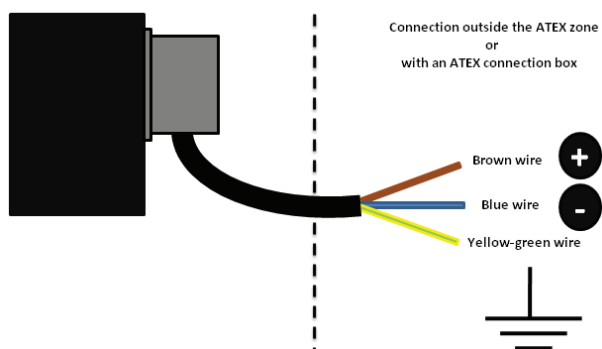
**SPU225X type ATEX SERVO-OPERATED
STAINLESS STEEL SOLENOID VALVE**

SPARE PARTS

#	DN	3/8"-1/2"	3/4"-1"	1"1/4	1"1/2	2"
7	ATEX coil	230 V AC code 980540 / 24 V AC code 980541 / 24V DC code 980542				
2	FKM diaphragm	980570	980571	980572	980573	980574
3	EPDM diaphragm	980585	980586	980587	980588	980589

MOUNTING AND MAINTENANCE

1. We recommend installing the solenoid valve just after delivery. If the material has to be stored, it should be in a dry and sheltered place.
2. The installation of a solenoid valve can only be operated by an operator authorized to work in an ATEX zone.
3. Please wear the necessary protection equipment for this type of operation: gloves and glasses.
4. The solenoid valve installation is not recommended on a humid environment.
5. Please check the fit between the solenoid valve, the explosive zone category and the surface temperature.
6. Please check the electrical power supply voltage and frequency. Current should not be applied to the coil unless it is installed on the solenoid valve body.
7. Before any operation, depressurize the pipes and wait for their complete cooling to room temperature.
8. A previous careful cleaning of the pipes and tanks is compulsory.
9. The installation of an upstream protection strainer is highly recommended.
10. Respect the mounting direction indicated by the arrow on the solenoid valve body.
11. The feeding cable has to be connected to a connection box outside of the ATEX area. If the device is to be connected inside the explosive area, it has to be with an ATEX approved connection box.
12. Protect the feeding line with an adapted circuit breaker.



Technical data given for information purpose only. May be subject to alteration without prior notice