



ELETTROVALVOLA SEVOASSISTITA 2/2 VIE N.C.
SOLENOID VALVE SERVO-ACTUATED 2/2 WAY N.C.
ZWANGSGESTEUERTES MAGNETVENTIL 2/2 WEGE S.G.

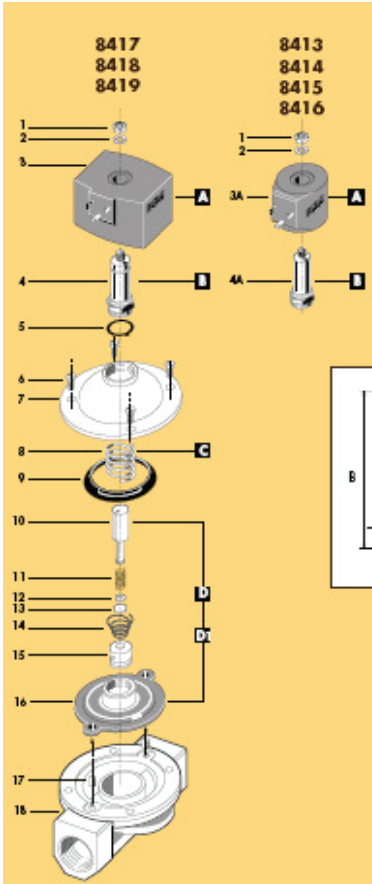
Model/Ref: 084001



*Partnership.
Without Limits.*

www.lauridsenindustri.dk

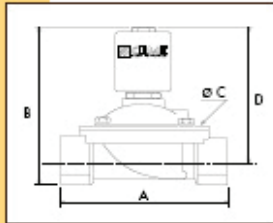
ELETTROVALVOLA SEVOASSISTITA 2/2 VIE N.C.
SOLENOID VALVE SERVO-ACTUATED 2/2 WAY N.C.
ZWANGSGESTEUERTES MAGNETVENTIL 2/2 WEGE S.G.



RICAMBI	SPARE PARTS	ERSATZTEILE
1	Washer	Washer
2	Coil	Magnetspule
3	Tube guide	Flangensrohr
4	O-ring	O-ring
5	Screw	Schraube
6	Valve body top	Deckel
7	Spring	Feder
8	Ring	Ring
9	Plunger	Plunger
10	Spring	Feder
11	Seppert	Scheibe
12	Seal	Dichtung
13	Spring	Feder
14	Bush	Bochse
15	Diaphragm	Membrano
16	Bush	Bochse
17	Valve body base	Grundkörper
18		

CARATTERISTICHE SPECIFICATIONS

ATTACCHI PESSES in → out	Ø mm	CODICE CODE	KV m ³ /h	M.O.P.D. bar AC DC	DIMENSIONI/ DIMENSIONS mm				PESO/WEIGHT Kg
3/8"	12	8413	2.20	5 5	61	105	48	92	0.680
1/2"	12	8414	2.20	5 5	61	105	48	92	0.660
3/4"	20	8415	5.50	4 2	100	110	80	93	1.100
1"	25	8416	7.50	4 2	100	116	80	96	1.200
1" 1/4	36	8417	17.50	4 2	146	200	128	170	5.200
1" 1/2	39	8418	19.00	4 2	146	200	128	170	5.000
2"	51	8419	32.40	4 2	174	216	146	180	6.500
3/8" NPT	12	8423	2.20	5 5	61	105	48	92	0.680
1/2" NPT	12	8424	2.20	5 5	69	105	48	92	0.670



**CARATTERISTICHE ELETTRICHE
ELECTRICAL INFORMATION**

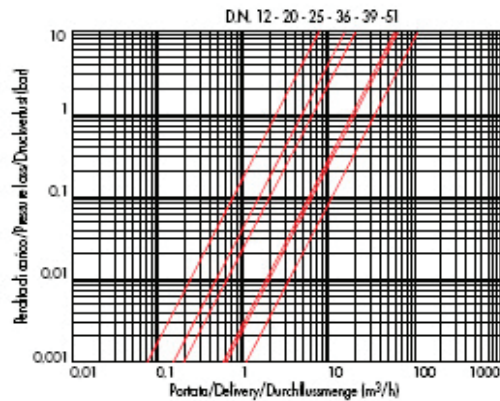
	POTENZA/POWER			
	8413-16-15-16		8417-18-19	
	NOMINALE NOM. 230V	SPINNO SPINDLE	NOMINALE NOM. 230V	SPINNO SPINDLE
V~	12 24 48 110 230 400	50 60 Hz	18VA 47VA 140VA 430VA	
V=	12 24 48 110		14W 43W	

Per dettagli costruttivi sulla bobine vedi capitolo "INFORMAZIONI DI PROGETTO"
 For construction details of the coils see chapter "PROJECT INFORMATION"
 Ausführliche Daten über die Ventilschulen finden Sie unter Abschnitt "TECHNISCHE
 INFORMATIONEN"

MAX TEMPERATURA MAX TEMPERATURE

FLUIDI/FLUIDS				AMBIENTE/AMBIENT
NBR	EPDM	EPDM-KTW	FPM	
90 °C	90 °C	90 °C	90 °C	80 °C

DIAGRAMMA PERDITA DI CARICO PRESSURE LOSS DIAGRAM



- 8413
- 8414
- 8415
- 8416
- 8423
- 8424



- 8417
- 8418
- 8419



serie 84

ELETTROVALVOLA SEVOASSISTITA 2/2 VIE N.C.
SOLENOID VALVE SERVO-ACTUATED 2/2 WAY N.C.
ZWANGSGESTEUERTES MAGNETVENTIL 2/2 WEGE S.G.

ELETTROVALVOLA SEVOASSISTITA 2/2 VIE N.C.
SOLENOID VALVE SERVO-ACTUATED 2/2 WAY N.C.
ZWANGSGESTEUERTES MAGNETVENTIL 2/2 WEGE S.G.



KTW


I CARATTERISTICHE GENERALI

PRESSIONE MINIMA DIFFERENZIALE DI FUNZIONAMENTO 0 bar

PARTI A CONTATTO CON IL FLUIDO

TENUTA

 NBR a richiesta FPM - EPDM
 EPDM-KTW tenuta adatta e certificata DVGW per l'intercezione di acqua potabile

CORPO

OTTONE

ORGANI INTERNI

ACCIAIO INOX

FLUIDI

ACQUA - ARIA - OLII LEGGERI

VALVOLA UNIDIREZIONALE

VALVOLA ISPEZIONABILE

VALVOLA FORNITA CON

POSIZIONE DI MONTAGGIO

 CONNETTORE TRIPOLARE UNI ISO 4400 (DIN 43650A) - JP65
 Si consiglia di montare la valvola con la bobina rivolta verso l'alto. I modelli 8417, 8418, 8419 devono essere installati in posizione orizzontale con bobina rivolta verso l'alto. 80°C, in D.C. per temperature superiori a 40°C, le performance (M.O.P.D.) potrebbero diminuire.

TEMPERATURA AMBIENTE

ESECUZIONI SPECIALI

 VERSIONE ANTI COLPO D'ARRETE CON TEMPO DI CHIUSURA + PIU' LENTO.
 PER I MODELLI 8415 e 8416 E' DISPONIBILE LA BOBINA B20 (30 W) PER AUMENTARE LA PRESTAZIONE IN D.C. (M.O.P.D.) A 4 BAR.

UK GENERAL FEATURES

MINIMUM DIFFERENTIAL WORKING PRESSURE: 0 bar

PARTS IN CONTACT WITH THE FLUID

SEALING

 NBR on request FPM - EPDM
 EPDM-KTW sealing approved and DVGW certified for interception of potable water

BODY

BRASS

INTERNAL PARTS

STAINLESS STEEL

FLUIDS

WATER- AIR - LIGHT OILS

ONE WAY DIRECTION VALVE

SERVICEABLE VALVE

VALVE SUPPLIED WITH

MOUNTING POSITION

 THREE POLE PLUG CONNECTOR UNI ISO 4400 (DIN 43650A)-JP65
 We advice installation of the valve with the coil vertical. Models 8417,8418,8419 must be mounted in the horizontal position with the coil vertical.

AMBIENT TEMPERATURE

80°C, in D.C. for temperatures higher than 40°C, the performances (M.O.P.D.) could decrease.

SPECIAL EXECUTIONS

 VERSION WITH WATER HAMMER DEVICE FOR SLOWER CLOSING TIME
 FOR MODELS 8415 AND 8416 , COIL TYPE B20 (30 W) IS AVAILA BLE TO INCREASE PERFORMANCES (M.O.P.D.) IN D.C. TO 4 BAR.

D ALLGEMEINE MERKMALE

MINIMALER DIFFERENTIALARBEITSDRUCK 0 bar

MEDIUMS BERTUEHRTE TEILE

DICHTUNG

 NBR auf Nachfrage FPM - EPDM
 EPDM-KTW Dichtung DVGW-KTW zertifiziert fuer den Trinkwassereinsatz.

KOERPER

MESSING

INNERE ELEMENTE

EDELSTAHL

MEDIEN

WASSER - LUFT- LEICHTE OELE

UNIDIREKTIONALES VENTIL

VENTIL WARTUNGSFREUNDLICH

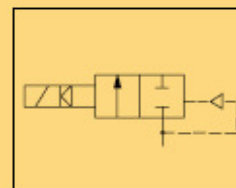
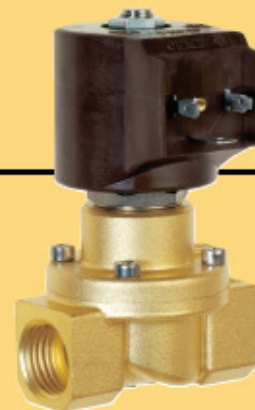
LIEFERUMFANG

MONTAGEPOSITION

 DREIPOLIGER STECKER UNI ISO 4400 (DIN 43650A)-JP65
 Es wird empfohlen das Ventil mit der Spule senkrecht nach oben einzubauen.
 Die Modelle 8417,8418,8419 muessen mit der Spule senkrecht nach oben eingebaut werden.
 80°C, im D.C.- Betrieb koennen Temperaturen ueber 40°C, die Schaltkraefte (M.O.P.D.) des Ventils beeintraechtigen.

UMGEBUNGSTEMPERATUR

SONDERAUSFUEHRUNGEN

 AUSFUEHRUNG LANGSAM SCHLIESSEND
 FUER DIE MODELLE 8415 UND 8416 IST DIE SPULE B20 (30 W) VERFUEGBAR UM DIE SCHALTKRAEFTE (M.O.P.D.) IN D.C. AUF 4 BAR ZU ERHOEHEN.


8413-8414-8415-8416-8423-8424
BOBINA TIPO B12
COIL TYPE B12
SPULE TYP B12



8417-8418-8419
BOBINA TIPO B60
COIL TYPE B60
SPULE TYP B60

serie 84

39