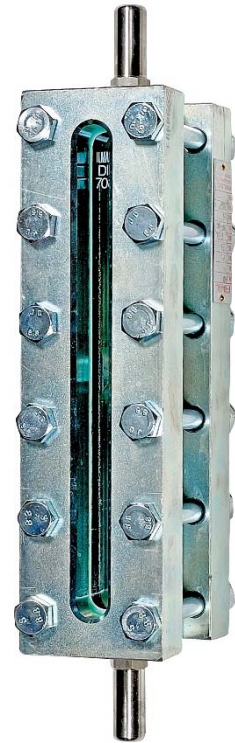


# TRANSPARENT STEEL LEVEL GAUGE TMF

## MAIN CHARACTERISTICS

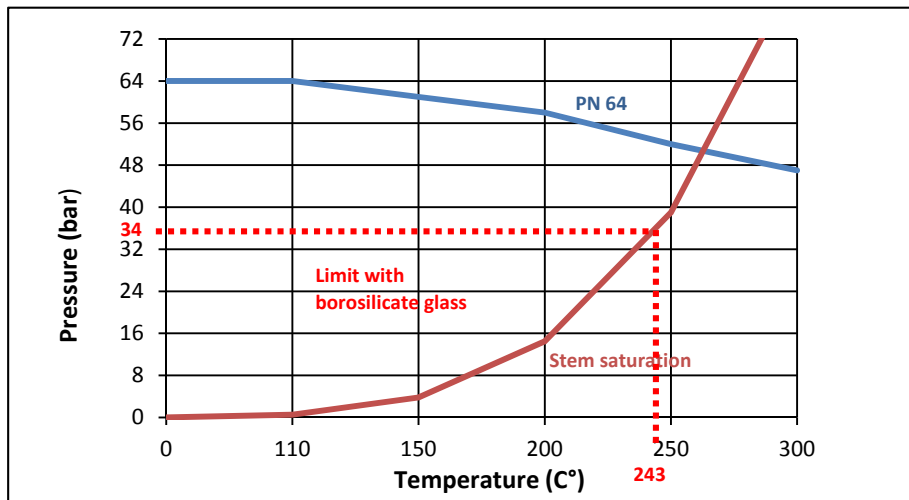
The TMF level gauge with transparency glass is intended for the immediate visual indication of a level of liquid in a tank. Of carbon steel standard construction carbon with side with flanged connections, this level gauge suits perfectly for the level indication on steam boilers until 34 bar. It is equipped with two borosilicate glasses following DIN 7081 standard type A.

The level gauge TMF must be linked by two NX isolation valves. The connection of the valve is made through smoother pipes  $\varnothing$  16 mm allowing an adjustment of the center distance.



## LIMITS OF USE

Max allowed fluid pressure : PS	64 bar to 20°C
Max allowed fluid temperature : TS	243°C with borosilicate glass
Max allowed fluid temperature : TS	280°C with mica
Use on saturated steam	34 bar to 243°C



Modifications reserved

# TRANSPARENT STEEL LEVEL GAUGE TMF

## REGULATIONS AND STANDARDS OF CONSTRUCTION

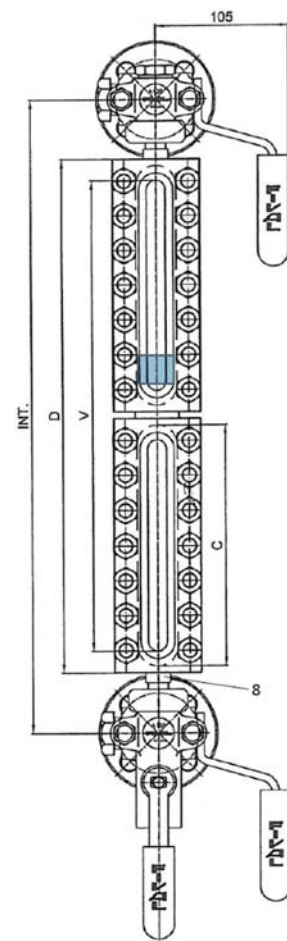
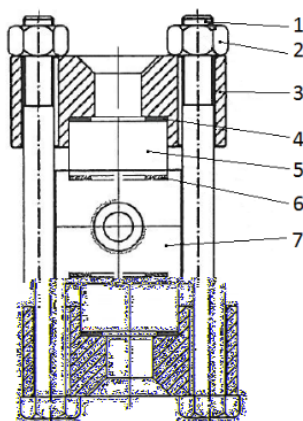
Item	Standard
Pressure equipment directive 97/23	Excluded
Dimensions of the glasses	DIN 7081
Steel materials	EN 1503-1

## CONNECTION

Smooths nipples  $\varnothing$  16mm length 60mm

## CONSTRUCTION

N°	Item	Material
1	Bolts	Steel B7
2	Nut	Steel 2H
3	Cover	Carbon steel
4	Upper gasket	Fiber
5	Transparent glasses	Borosilicate
6	Lower gasket	Graphit
7	Body	Carbon steel
8	Nipples	Stainless steel



## DIMENSIONS (mm) AND WEIGHT (kg)

Size	1	2	3	4	5	6	7	8	9
Center distance INT	235	260	285	310	340	370	400	440	460
D	128	153	178	203	233	263	293	333	353
Visibility	91	116	141	166	196	226	256	296	313
C	115	140	165	190	220	250	280	320	340
Glasses type	A	A	A	A	A	A	A	A	A
Weight (kg)	Consult us	Consult us	3	3,5	7,8	8,8	9,8	Consult us	Consult us

Size	2x4	2x5	2x6	2x7	2x8	2x9	3x6	3x7	3x8	3x9
Center distance INT	514	575	635	695	775	815	900	990	1110	1170
D	406	466	526	586	666	706	789	879	999	1059
Visibility	367	427	489	549	628	668	751	841	961	1021
C	190	220	250	280	320	340	250	280	320	340
Glasses type	A	A	A	A	A	A	A	A	A	A
Weight (kg)	Consult us	Consult us	Consult us	Consult us	Consult us	Consult us	Consult us	Consult us	Consult us	Consult us

Size	4x7	4x8	4x9	5x7	5x8	5x9	6x8	6x9	7x9
Center distance INT	1285	1445	1525	1580	1780	1880	2115	2235	2590
D	1172	1332	1412	1465	1665	1765	1998	2118	2471
Visibility	1134	1294	1374	1427	1627	1727	1960	2080	2433
C	280	320	340	280	320	340	320	340	340
Glasses type	A	A	A	A	A	A	A	A	A
Weight (kg)	Consult us	Consult us	Consult us	Consult us	Consult us	Consult us	Consult us	Consult us	Consult us

Modifications reserved

# TRANSPARENT STEEL LEVEL GAUGE TMF

## MOUNTING AND USE

- 1 - Isolate the supply system of the level gauge and remove the indicator case from transparency of the installation.
- 2 - To install Borosilicate glasses, begin by unscrewing in the order the nuts of the case and to remove bootstraps.
- 3 - Remove delicately both bodies of the case to separate the left axis passage of the fluid as well as the damaged glasses, the holds and the joints.
- 4 - Clean the impacts of gasket. IT is very important to take up new gaskets on absolutely healthy impacts and perfect parallelism. (Never reuse worn gaskets). Remember itself that the gaskets of glasses back must be placed near (on the side of) grooves.
- 5 - Mounted successively:
  - Hold before, glasses, seal back, part median, back part or stirrup following the models of the gauges.
  - Tighten the screws.
  - Never tighten the level gauge body in a vice but put it on a plane surface.
  - Never use adhesives.
- 6 - Optional a MICA of protection (transparent glasses only) maybe put on the glass (Highly-rated fluid).
- 7 - Put back the assembly on the installation and open the supply system.

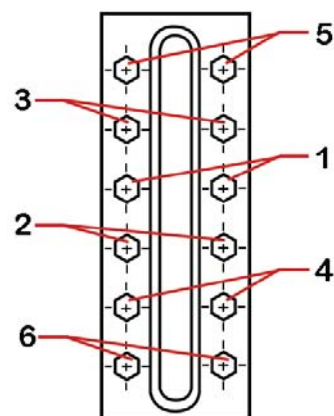
## MAINTENANCE

- 1 - Visual control.
- 2 - Cleaning of glasses (cloth).

### INDICATIVE PLAN OF PLAN OF TIGHTENING:

Respect the torque of tightening indicated for level indicator.

For the TMF level gauge this torque value is 37 Nm.



## SPARE PARTS

- 1 - Glasses borosilicate : FT 2350

Models	A1	A2	A3	A4	A5	A6	A7	A8	A9
Code	2351911	2351912	2351913	2351914	2351915	2351916	2351917	2351918	2351919

## OPTIONS

- 1 - Valves type NX : FT 2315
- 2 - Nipples (Item 8) : lenght 57,5 – 62 – 102 mm
- 3 - MICA : FT 2350

Modifications reserved