

---

The brass 2-way ball valve 502+SF provides the manual shut-off function with position display and feedback information control. The 502 valve is suitable for usual non-corrosive fluids: water, air, hydrocarbons, etc. It is a full-bore valve. It is EC- and ACS-approved (French health compliance certificate). The SF switch box is equipped, as standard, with 2 dry contacts. Due to its IP67 leak-tightness, it can be installed both indoors and outdoors. Different contacts and detectors are available as options. Lockable handle.

---

CW 617N brass body

1/4" to 4" diameters

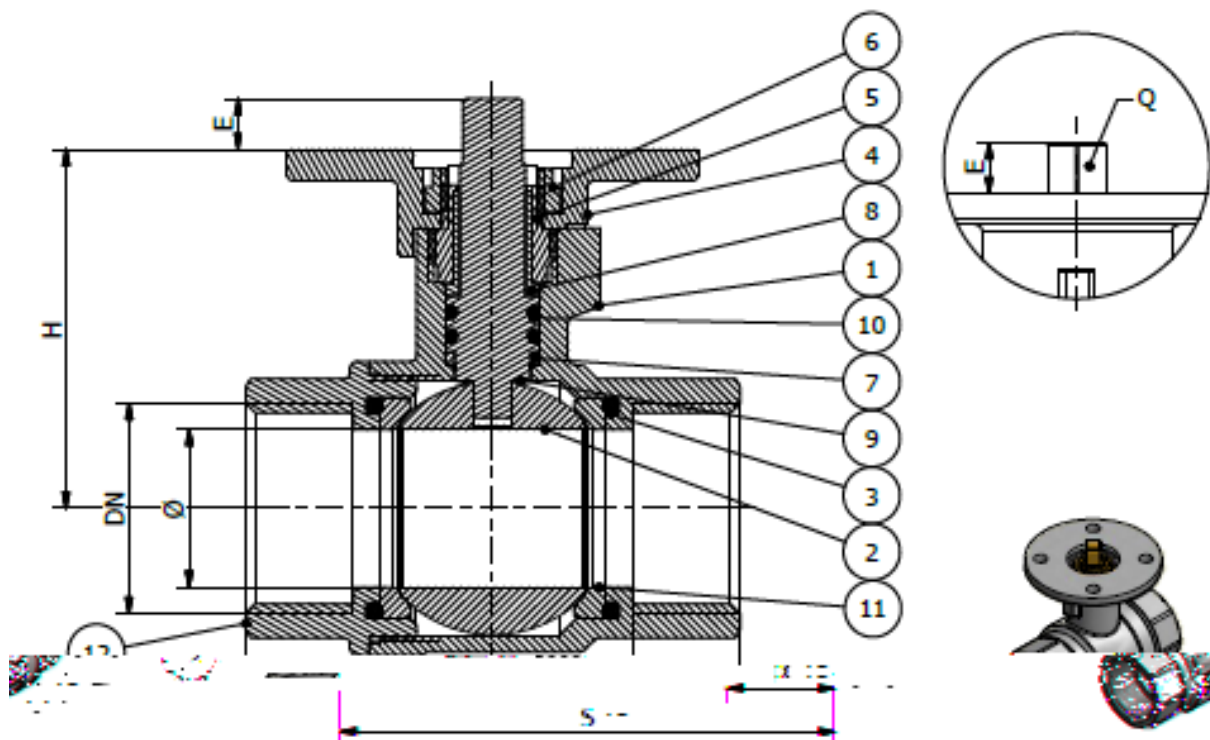
G threaded connections

Electrical connection: 2 x M20x1.5

---

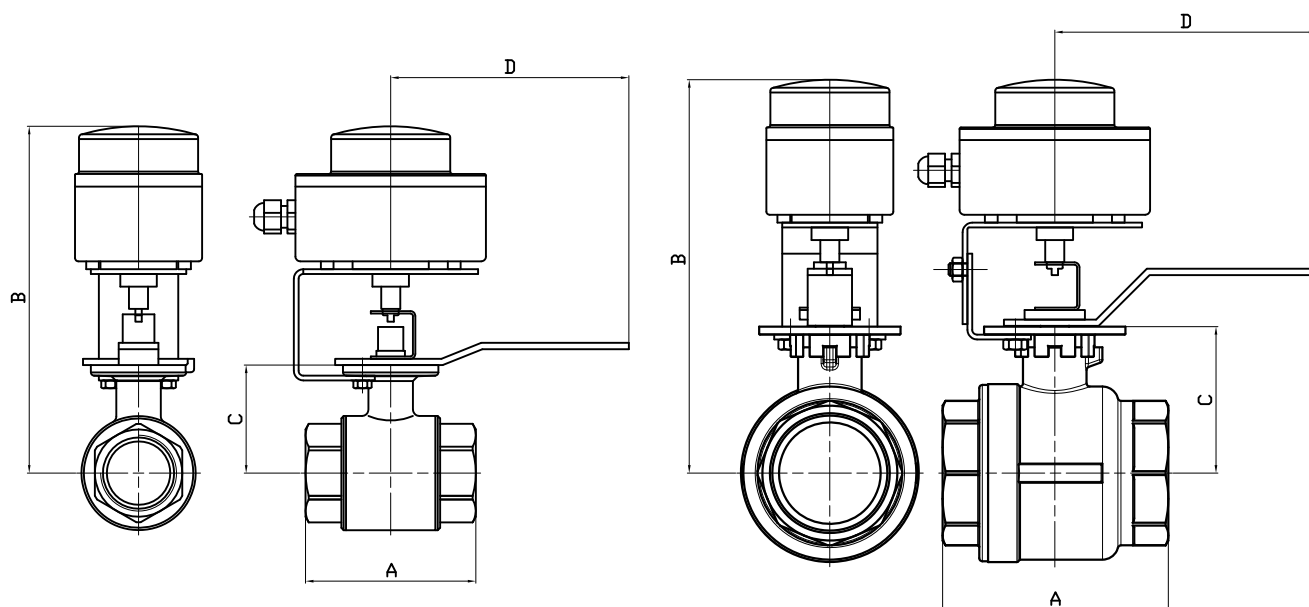
	16 bar
	-10°C / +100°C
	- 20°C / + 80°C

	Body	Nickel-plated CW 617N brass		Anti-friction ring	PTFE
	Sphere	Chromium-plated CW 617N brass		Anti-friction coupling	PTFE
	O-ring (DN 2" 1/2 à 4")	NBR		Stem	CW 614N brass
	Motorisation flange	Nickel-plated CW 617N brass		O-ring	NBR / FPM
	Nut	CW 614N brass		Seat	PTFE
	Nut	CW 614N brass		End	Nickel-plated CW 617N brass



Ø	10	10	15	20	25	32	40	49	64	78	100
S	50	60	63.5	72	86	96	107	124	141	159	195
P	10	11	14	16	17	18	19	21	25	25	30
H	33	34	45	48.5	52.5	56.5	68	73.5	92	102	129
E	9	9	13	13	13	13	13	13	12	12	18
Q	9	9	11	11	11	11	11	11	14	14	17
ISO	F03	F03	F05	F05	F05	F05	F05	F05	F05	F05	F07

Information given as an indication only, and subject to possible modifications



data subject to altera

Ech: /	Date :30/03/2012	Dessiné par : E.D	Tolérances générales : +/- 0.2	Modifications	Date	REV.
				Matière :		
				Poids (Kg) :		
				Traitement : SANS		
				Plan n° Ens 1133B		

# SF-TYPE SOLDO SWITCH BOXES

## FEATURES

## AVAILABLE MODELS

—

## LIMITS OF USE

Ambient temperature	
IP Code	
SF	

## MECHANICAL CONNECTION

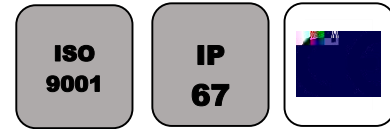
Axis dimension	
Attachment	
Stainless steel arches for attachment onto the actuator	    

## ELECTRICAL CONNECTION

Standard cable inputs	
Optional cable inputs	

## CONSTRUCTION

Casing and lid	
Coating	
Stem	
Dome	



# SF-TYPE SOLDO SWITCH BOXES

## SWITCH DETAILS SF model

Ref.	Switch	Features	Max.
		_____	
		_____	
		_____	
		_____	
		_____	
		_____	
		_____	
		_____	
		_____	
		_____	
		_____	
		_____	
		_____	

## OPTIONS


## SF-TYPE SOLDO SWITCH BOXES

### DIMENSIONS (mm)

