

# BRASS BALL VALVE REFERENCE + Series

## Water agreement - A.C.S. N° 04 ACC LI 015

### Ref. 572/573/562/515

Ref. : DS 572

Rev. :

Date : 01/05



Valves and fittings

90 rue du ruisseau 38297 ST QUENTIN FALLAVIER  
 Tel : (33)04.74.94.15.90 Fax : (33)04.74.95.62.08  
 E.mail : sferaco@sferaco.fr

#### SPECIFICATIONS :

- . Full bore
- . with gland pack
- . Anti-blow out stem
- . With flat steel handle or butterfly handle

#### USE :

- . Water distribution
- . Max temperature Ts: 120°C
- . Max pressure Ps : see dimensions

#### RANGE :

- . Female/Female flat steel handle **Ref.572** 1/4" to 4"
- . Female/Female butterfly handle **Ref.512** 1/4" to 1"
- . Male/Female flat steel handle **ref.573** 1/4" to 2"
- . Male/Female butterfly handle **ref.574** 1/4" to 1"
- . Male/Male flat steel handle **ref.562** 3/8" to 2"
- . Male/Male butterfly handle **ref.563** 3/8" to 1"
- . Female/Female with drainer flat steel handle **Ref.515** 1/2" to 2"
- . Female/Female with drainer butterfly handle **Ref.516** 1/2" to 1"

#### MATERIALS :

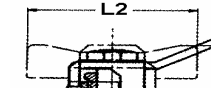
DESIGNATION	MATERIALS
External Body	Nickel plated brass EN 12165
Internal body	Brass EN 12165
Ball	Chromed brass EN 12165
Stem	Brass EN 12164
Seat	PTFE
Packing	PTFE

#### STANDARDS :

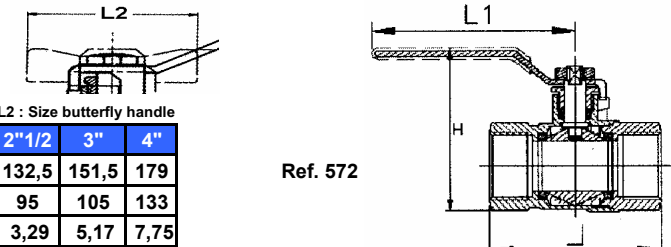
- . French water agreement
- N° (A.C.S.) N° 04 ACC LY 015**
- . **DIRECTIVE 97/23/CE : Products excluded from directive (Article 1,§3.2)**

#### SIZE :

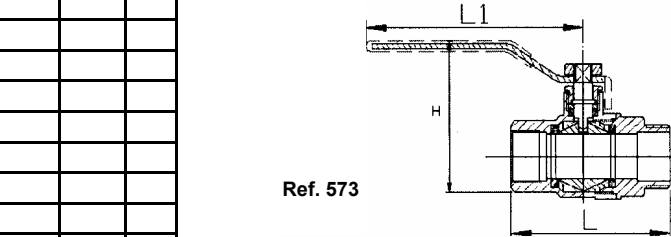
Ref.	DN	L2 : Size butterfly handle											
		1/4"	3/8"	1/2"	3/4"	1"	1"1/4"	1"1/2"	2"	2"1/2"	3"	4"	
Ref. 572	L	45	45	52	60	70	84	93,3	106,5	132,5	151,5	179	
	H	42	42	50,5	55	64,7	72	87,5	98	95	105	133	
	Weig.	0,15	0,13	0,2	0,31	0,52	0,78	1,11	1,55	3,29	5,17	7,75	
Ref. 573	L	45	45	54	62	73	86	97,3	107,5				
	H	42	42	50,5	55	64,7	72	87,5	98				
	Weig.	0,145	0,14	0,205	0,315	0,525	0,81	1,19	1,58				
Ref. 562	L	49	49	60	68	80	93	108	118				
	H	42	42	50,5	55	64,7	72	87,5	98				
	Weig.		0,145	0,2	0,32	0,505	0,81	1,04	1,51				
Ref. 515	L			57	65	75	90.5	99.3	110.5				
	H			50,5	55	64,7	72	87.5	98				
	Weig.			0,26	0,37	0,555	0,775	1,19	1,65				
All Ref.	L1	80	80	90	100	116	122	140	140	240	240	240	
	L2	52	52	52	62	62							
	Ø	10	10	15	20	25	32	40	50	61	74	95	
	Ps	40	40	40	40	40	30	30	20	18	18	18	



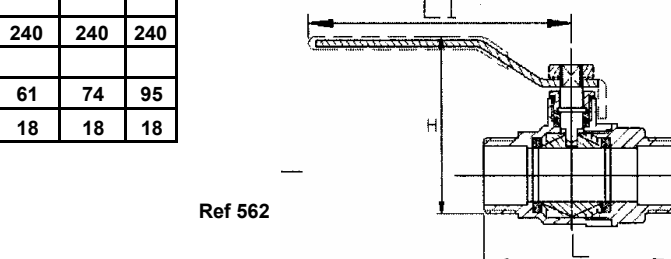
L2 : Size butterfly handle



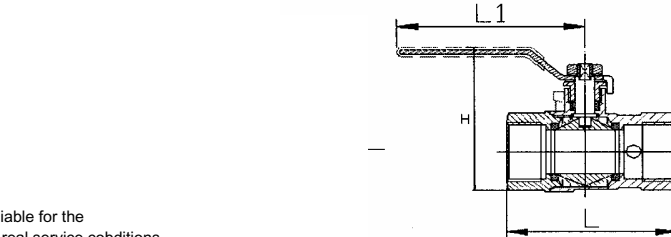
Ref. 572



Ref. 573



Ref 562



ADVICE : Our opinion and our advice are not guaranteed and Lauridsen Industry shall not be liable for the consequences of damages. The customer must check the right choice of the products with the real service conditions.