



DUCTILE IRON GLOBE VALVE WITH BELLOW PN16

Model/Ref: 476



*Partnership.
Without Limits.*

www.lauridsenindustri.dk

DUCTILE IRON GLOBE VALVE WITH BELLOW PN16

ISO 9001
BUREAU VERITAS
Certification



Size : DN 15 to DN 200
Ends : Flanges R.F. ISO PN16
Min Temperature : - 10°C
Max Temperature : + 350°C
Max Pressure : 16 Bars
Specifications : Rotating non rising stem and handwheel
Bolted bonnet and gland pack
Stainless steel bellow

Materials : Ductile iron

DUCTILE IRON GLOBE VALVE WITH BELLOW PN16
SPECIFICATIONS :

- Respect the flow direction indicated by the arrow
- Rotating non rising stem and handwheel
- Bolted bonnet and gland pack
- Stainless steel bellow
- Flanges R.F. ISO PN16
- Grey painting RAL 7011-7012

USE :

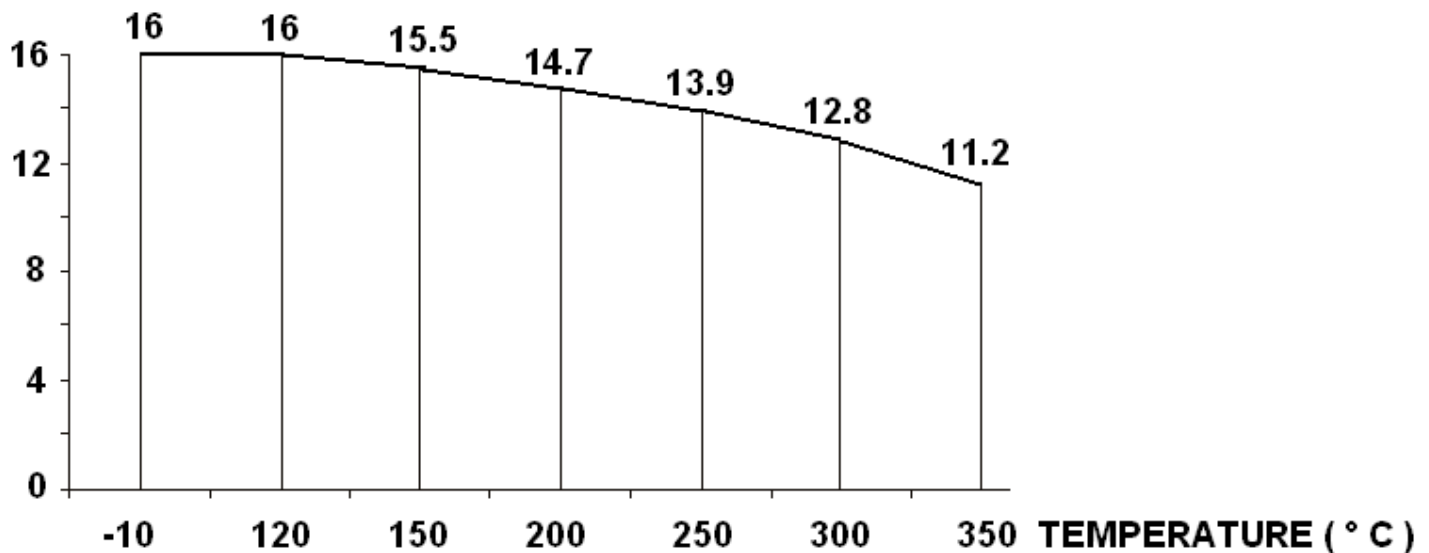
- For all common fluids
- Min and max Temperature Ts : - 10°C to + 350°C
- Max Pressure PN : 16 bars (see graph)
- Keep greased the stem
- **Steam : 10 bars maximum**

FLOW COEFFICIENT Kvs (M3 / h) :

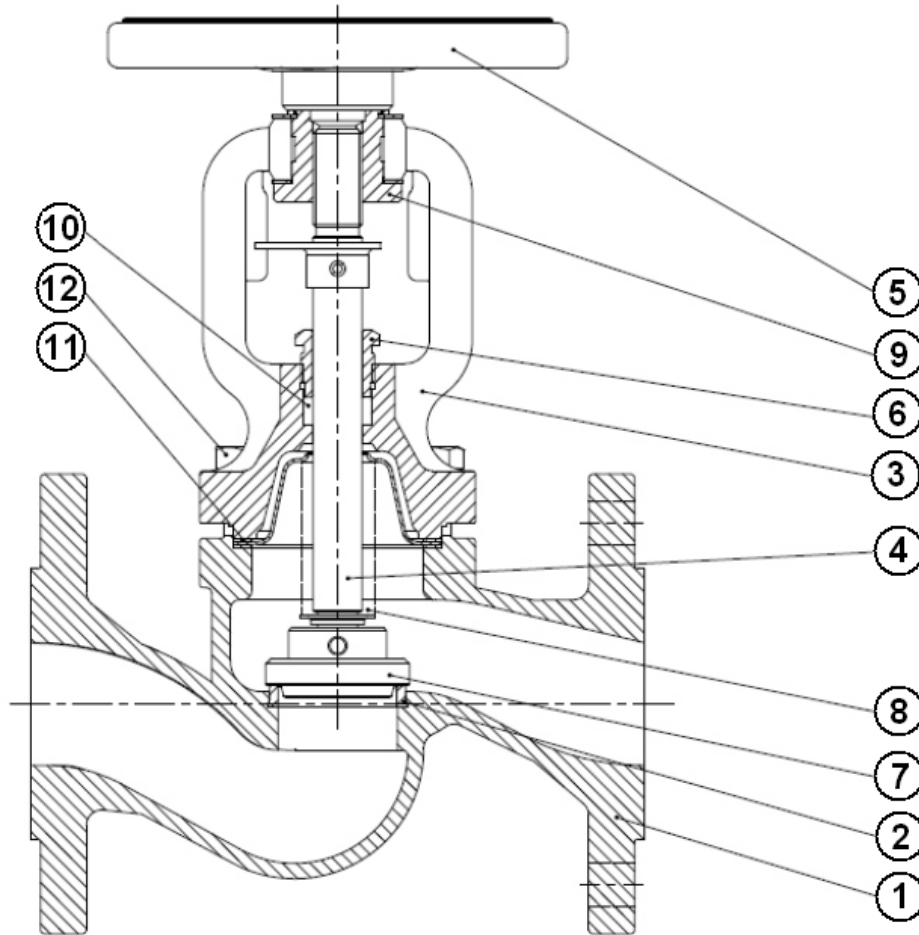
DN	15	20	25	32	40	50	65	80	100	125	150	200
Kvs (m3/h)	5.9	7.4	13	18	30	41	79	115	181	225	364	725

PRESSURE / TEMPERATURE GRAPH :

Pressure (Bar)


RANGE :

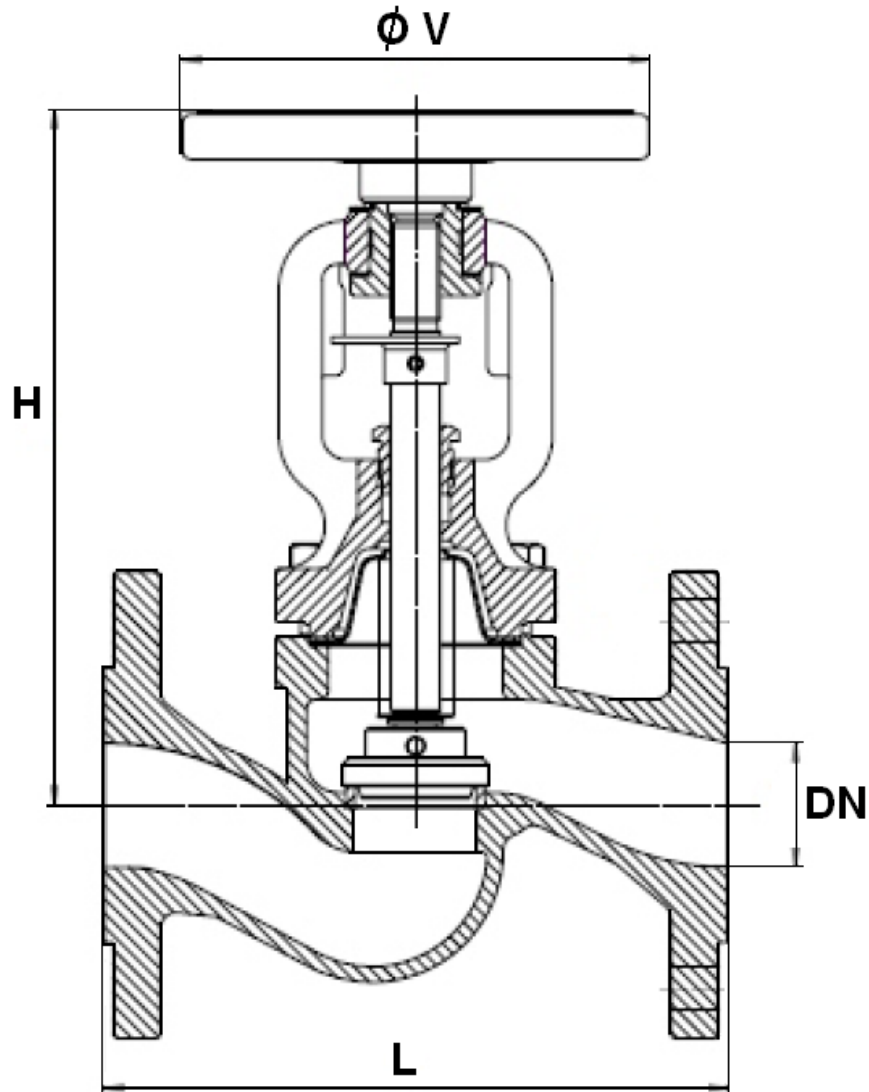
- Ductile iron globe valve with stainless steel bellow flanged R.F. ISO PN16 **Ref. 476** from DN 15 to DN 200

DUCTILE IRON GLOBE VALVE WITH BELLOW PN16
MATERIALS :


Item	Designation	Materials
1	Body	EN-GJS400-18 LT
2	Seat	SS 410 (1.4006)
3	Bonnet	EN-GJS400-18 LT
4	Stem	SS 420 (1.4021)
5	Handwheel	Steel
6	Gland pack	Steel 11SMnPb30
7	Disc	SS 420 (1.4021)
8	Bellow	SS 316
9	Sleeve	Steel 11SMnPb30
10	Packing	Graphite
11	Bonnet gasket	Graphite + CrNiSt
12	Bolting	A2-70

DUCTILE IRON GLOBE VALVE WITH BELLOW PN16

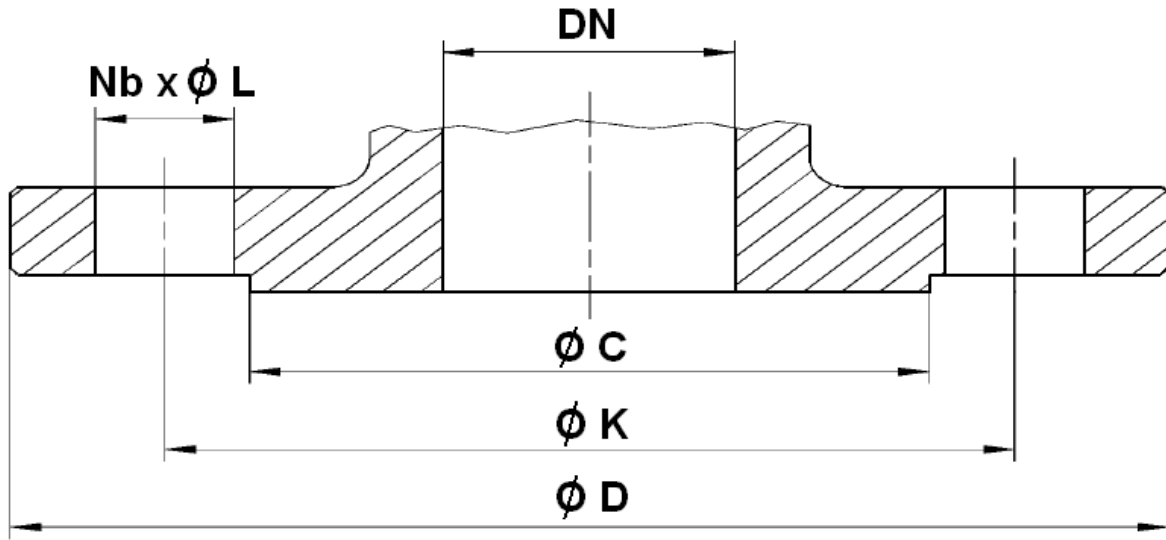
SIZE (in mm) :



Ref.	DN	15	20	25	32	40	50	65	80	100	125	150	200
476	L	130	150	160	180	200	230	290	310	350	400	480	600
	H	178	178	193	201	224	228	270	295	321	388	448	575
	Ø V	125	125	125	125	150	150	175	200	250	300	400	500
	Weight (Kg)	3.2	3.9	4.6	6.5	9	11	15.8	20.5	35	49	76	130.5

DUCTILE IRON GLOBE VALVE WITH BELLOW PN16

FLANGES SIZE (in mm) :



Ref.	DN	15	20	25	32	40	50	65	80	100	125	150	200
476	Ø C	46	56	65	76	84	99	118	132	156	184	211	266
	Ø D	95	105	115	140	150	165	185	200	220	250	285	340
	Ø K	65	75	85	100	110	125	145	160	180	210	240	295
	Nb x Ø L	4 x 14	4 x 14	4 x 14	4 x 19	4 x 19	4 x 19	4 x 19	8 x 19	8 x 19	8 x 19	8 x 23	12 x 23

DUCTILE IRON GLOBE VALVE WITH BELLOW PN16**STANDARDS :**

- Fabrication according to ISO 9001 : 2008
- DIRECTIVE 97/23/CE : CE N° 0062
Risk category III module H
- Tests according to EN 12266-1 (Range A)
- Length according to EN 558 series 1 (DIN 3202 F1)
- Flanges R.F. according to EN 1092-2 PN16
- Approval certificate Russian Federation **GOST-R**
- Approval certificate Polish **PZH**

ADVICE :Our opinion and our advice are not guaranteed and Lauridsen Industri shall not be liable for the consequences of damages.

The customer must check the right choice of the products with the real service conditions.

DUCTILE IRON GLOBE VALVE WITH BELLOW PN16**INSTALLATION INSTRUCTIONS****GENERAL GUIDELINES :**

- Ensure that the valves to be used are appropriate for the conditions of the installation (type of fluid, pressure and temperature).
- Be sure to have enough valves to be able to isolate the sections of piping as well as the appropriate equipment for maintenance and repair.
- Ensure that the valves to be installed are of correct strength to be able to support the capacity of their usage.
- **Installation of all circuits should ensure that their function can be automatically tested on a regular basis (at least two times a year).**

INSTALLATION INSTRUCTIONS :

- **Before installing the valves, clean and remove any objects from the pipes** (in particular bits of sealing and metal) which could obstruct and block the valves.
- **Ensure that both connecting pipes either side of the valve (upstream and downstream) are aligned (if they're not, the valves may not work correctly).**
- **Make sure that the two sections of the pipe (upstream and downstream) match, the valve unit will not absorb any gaps. Any distortions in the pipes may affect the tightness of the connection, the working of the valve and can even cause a rupture.** To be sure, place the kit in position to ensure the assembling will work.
- **If sections of piping do not have their final support in place, they should be temporarily fixed. This is to avoid unnecessary strain on the valve.**
- Tighten the bolts in cross.
- It's recommended to operate the valve (open and close) 1 to 2 times per year
- Tighten the gland packing at the first start of the installation (with a moderate torque) so that there's no leakage and the handwheel is easy to operate.
- Do not use tools to operate the handwheel
- Respect the flow direction indicated by the arrow