



FLANGES AND FLANGE GASKETS

Model/Ref: 2100 - 2109



*Partnership.
Without Limits.*

www.lauridsenindustri.dk

FLANGES AND FLANGE GASKETS

CE

Size : DN 15 to 300 mm
Ends : Flanges ISO PN10/16/25/40
Max Temperature : + 150°C for flange gaskets, 200°C for flanges
Max Pressure : 40 Bars for flanges ISO PN40
Specifications : Welding flanges
Flat flanges or butt welding types
Flange gaskets 2 mm thickness

Materials : Carbon steel or stainless steel

FLANGES AND FLANGE GASKETS
SPECIFICATIONS :

- Welding flanges
- Flat flanges or butt welding types
- Flange gaskets 2 mm thickness

USE :

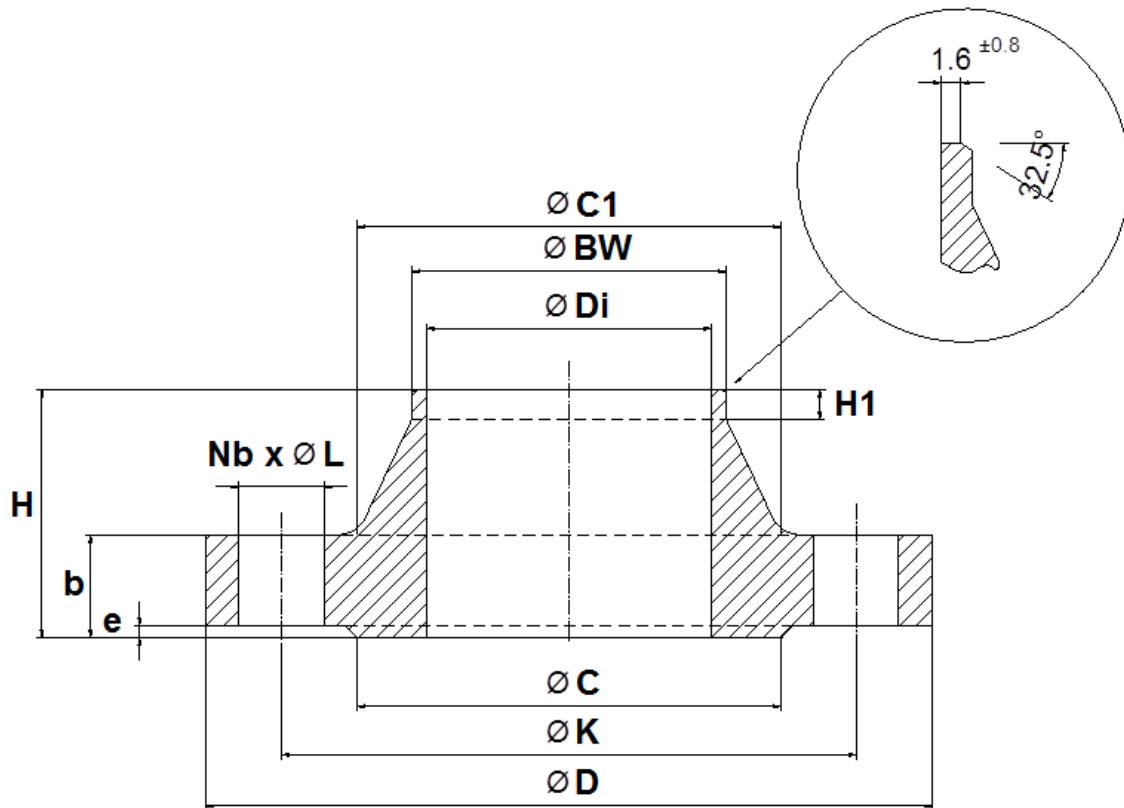
- Water, hydrocarbons, steam, gas
- Max Temperature Ts : + 150°C for flange gasket **Ref. 98021**
- Max Temperature Ts : + 200°C for flanges
- Max Pressure PN :
 - 10 bars for ISO PN10 flanges **Réf. 2101**
 - 16 bars for ISO PN16 flanges **Réf. 2100**
 - 25 bars for ISO PN25 flanges **Réf. 2105**
 - 40 bars for ISO PN40 flanges **Réf. 2105**
 - 40 bars for flange gaskets **Réf. 98021**

RANGE :

- Butt welding carbon steel flanges R.F. ISO PN16 type 11B1 **Ref. 2100** from DN 15 to DN300
- Butt welding carbon steel flanges R.F. ISO PN10 type 11B1 **Ref. 2101** from DN 200 to DN300
- Butt welding carbon steel flanges R.F. ISO PN25/40 type 11B1 **Ref. 2105** from DN 15 to DN200
- Flat stainless steel flanges ISO PN16 type 01A **Ref. 2109** from DN 15 to DN200
- Flange gaskets **Ref. 98021** from DN15 to DN300

MATERIALS :

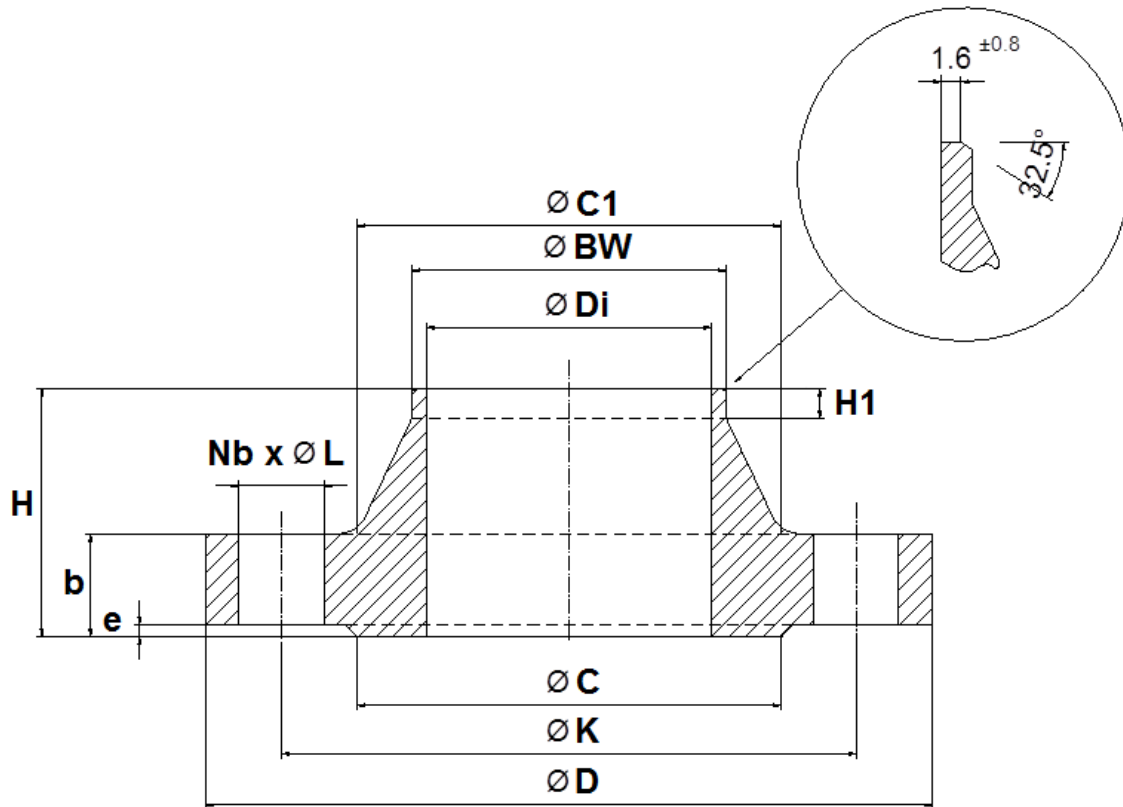
| Materials Ref. 2100/2101/2105 | Materials Ref. 2109 | Materials Ref. 98021 |
|-------------------------------|---------------------|----------------------|
| Carbon steel P245GH | ASTM A182 F316L | Fibers |

FLANGES AND FLANGE GASKETS
BUTT WELDING CARBON STEEL FLANGES ISO PN16 SIZE, TYPE 11B1 REF.2100 (in mm) :


| DN | 15 | 20 | 25 | 32 | 40 | 50 | 65 | 80 | 100 | 125 | 150 | 200 | 250 | 300 |
|------------|--------|--------|--------|--------|--------|--------|--------|--------|--------|--------|--------|---------|---------|---------|
| Ø C | 45 | 58 | 68 | 78 | 88 | 102 | 122 | 138 | 158 | 188 | 212 | 268 | 320 | 378 |
| Ø C1 | 32 | 40 | 46 | 56 | 64 | 74 | 92 | 105 | 131 | 156 | 184 | 235 | 292 | 344 |
| Ø D | 95 | 105 | 115 | 140 | 150 | 165 | 185 | 200 | 220 | 250 | 285 | 340 | 405 | 460 |
| Ø Di | 17.3 | 22.3 | 28.5 | 37.2 | 43.1 | 54.5 | 70.3 | 82.5 | 106.4 | 131.7 | 158 | 206.5 | 260.4 | 309.7 |
| Ø K | 65 | 75 | 85 | 100 | 110 | 125 | 145 | 160 | 180 | 210 | 240 | 295 | 355 | 410 |
| Ø BW | 21.3 | 26.9 | 33.7 | 42.4 | 48.3 | 60.3 | 76.1 | 88.9 | 115 | 141.4 | 167 | 219.1 | 273 | 323.9 |
| Nb x ØL | 4 x 14 | 4 x 14 | 4 x 14 | 4 x 18 | 4 x 18 | 4 x 18 | 8 x 18 | 8 x 18 | 8 x 18 | 8 x 18 | 8 x 22 | 12 x 22 | 12 x 26 | 12 x 26 |
| H | 38 | 40 | 40 | 42 | 45 | 45 | 45 | 50 | 52 | 55 | 55 | 62 | 70 | 78 |
| H1 | 6 | 6 | 6 | 6 | 7 | 8 | 10 | 10 | 12 | 12 | 12 | 16 | 16 | 16 |
| b | 16 | 18 | 18 | 18 | 18 | 18 | 18 | 20 | 20 | 22 | 22 | 24 | 26 | 28 |
| e | 2 | 2 | 2 | 2 | 3 | 3 | 3 | 3 | 3 | 3 | 3 | 3 | 3 | 4 |
| Weig. (Kg) | 0.8 | 1.1 | 1.3 | 2 | 2.1 | 2.5 | 3 | 4 | 4.6 | 6.3 | 7.8 | 11.5 | 16.5 | 22 |

FLANGES AND FLANGE GASKETS

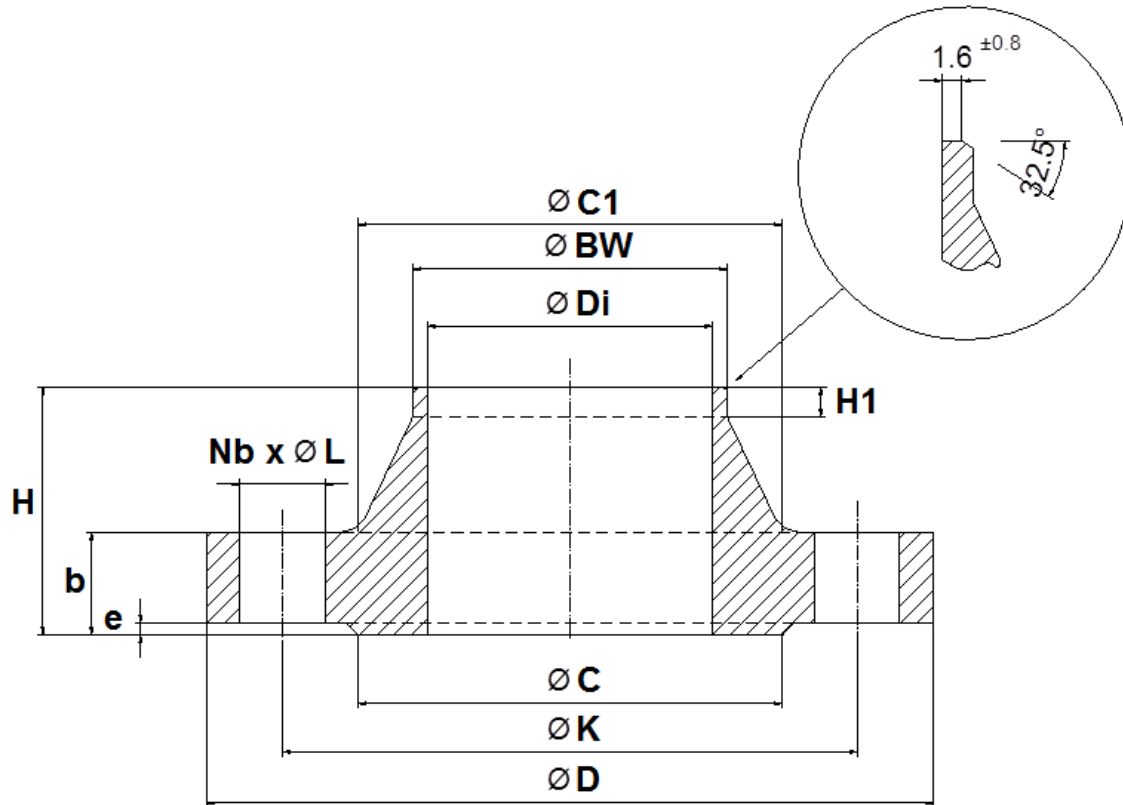
BUTT WELDING CARBON STEEL FLANGES ISO PN10 SIZE, TYPE 11B1 REF.2101 (in mm) :



| DN | 200 | 250 | 300 |
|-------------|--------|---------|---------|
| Ø C | 268 | 320 | 370 |
| Ø C1 | 234 | 292 | 342 |
| Ø D | 340 | 395 | 445 |
| Ø Di | 206.5 | 260.4 | 309.7 |
| Ø K | 295 | 350 | 400 |
| Ø BW | 219.1 | 273 | 323.9 |
| Nb x ØL | 8 x 22 | 12 x 22 | 12 x 22 |
| H | 62 | 68 | 68 |
| H1 | 16 | 16 | 16 |
| b | 24 | 26 | 26 |
| e | 3 | 3 | 4 |
| Weight (Kg) | 11.5 | 15.8 | 18.3 |

FLANGES AND FLANGE GASKETS

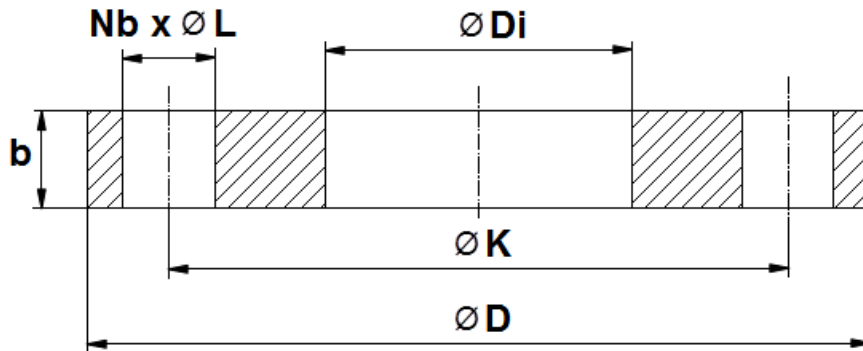
BUTT WELDING CARBON STEEL FLANGES ISO PN25/40 SIZE, TYPE 11B1 REF.2105 (in mm) :



| DN | 15 | 20 | 25 | 32 | 40 | 50 | 65 | 80 | 100 | 125 | 150 | 200 PN25 | 200 PN40 |
|---------------------------|--------|--------|--------|--------|--------|--------|--------|--------|--------|--------|--------|----------|----------|
| $\varnothing C$ | 45 | 58 | 68 | 78 | 88 | 102 | 122 | 138 | 162 | 188 | 218 | 285 | 285 |
| $\varnothing C1$ | 32 | 40 | 46 | 56 | 64 | 75 | 90 | 105 | 134 | 162 | 192 | 244 | 244 |
| $\varnothing D$ | 95 | 105 | 115 | 140 | 150 | 165 | 185 | 200 | 235 | 270 | 300 | 360 | 375 |
| $\varnothing Di$ | 17.3 | 22.3 | 28.5 | 37.2 | 43.1 | 54.5 | 70.3 | 82.5 | 105.7 | 131 | 158 | 206.5 | 206.5 |
| $\varnothing K$ | 65 | 75 | 85 | 100 | 110 | 125 | 145 | 160 | 190 | 220 | 250 | 310 | 320 |
| $\varnothing BW$ | 21.3 | 26.9 | 33.7 | 42.4 | 48.3 | 60.3 | 76.1 | 88.9 | 114.2 | 141.7 | 170 | 219.1 | 219.1 |
| $Nb \times \varnothing L$ | 4 x 14 | 4 x 14 | 4 x 14 | 4 x 18 | 4 x 18 | 4 x 18 | 8 x 18 | 8 x 18 | 8 x 22 | 8 x 26 | 8 x 26 | 12 x 28 | 12 x 30 |
| H | 38 | 40 | 40 | 42 | 45 | 48 | 52 | 58 | 65 | 68 | 75 | 88 | 88 |
| H1 | 6 | 6 | 6 | 6 | 7 | 8 | 10 | 12 | 12 | 12 | 12 | 16 | 16 |
| b | 16 | 18 | 18 | 18 | 18 | 20 | 22 | 24 | 24 | 26 | 28 | 34 | 34 |
| e | 2 | 2 | 2 | 2 | 3 | 3 | 3 | 3 | 3 | 3 | 3 | 3 | 3 |
| Weig. (Kg) | 0.8 | 1.1 | 1.3 | 2 | 2.1 | 3 | 4 | 5 | 6.5 | 9 | 11.5 | 21 | 21 |

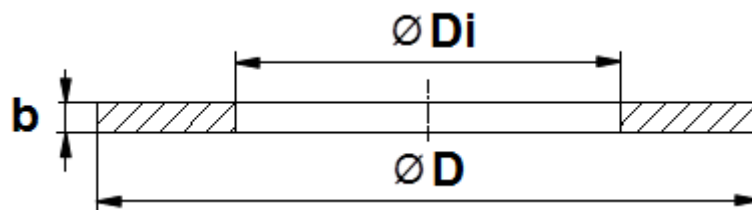
FLANGES AND FLANGE GASKETS

FLAT STAINLESS STEEL FLANGES ISO PN16 SIZE, TYPE 01A REF.2109 (in mm) :



| DN | 15 | 20 | 25 | 32 | 40 | 50 | 65 | 80 | 100 | 125 | 150 | 200 |
|------------|--------|--------|--------|--------|--------|--------|--------|--------|--------|--------|--------|---------|
| Ø D | 95 | 105 | 115 | 140 | 150 | 165 | 185 | 200 | 220 | 250 | 285 | 340 |
| Ø Di | 22 | 27.5 | 34.8 | 43.5 | 49.5 | 61 | 77.5 | 90 | 116 | 140 | 170 | 221.5 |
| Ø K | 65 | 75 | 85 | 100 | 110 | 125 | 145 | 160 | 180 | 210 | 240 | 295 |
| Nb x ØL | 4 x 14 | 4 x 14 | 4 x 14 | 4 x 18 | 4 x 18 | 4 x 18 | 8 x 18 | 8 x 18 | 8 x 18 | 8 x 18 | 8 x 22 | 12 x 22 |
| b | 14 | 16.4 | 15.5 | 17.8 | 18.6 | 19.4 | 21 | 20 | 21 | 22.7 | 25 | 26 |
| Weig. (Kg) | 0.67 | 0.95 | 1.1 | 1.62 | 1.82 | 2.45 | 3 | 3.95 | 4.4 | 5.9 | 7.1 | 10 |

FLANGE GASKET SIZE, REF.98021 (in mm) :



| DN | 15 | 20 | 25 | 32 | 40 | 50 | 65 | 80 | 100 | 125 | 150 | 200 | 250 | 300 |
|------------|-------|------|------|------|-------|------|------|------|------|-------|-------|-------|------|-------|
| Ø D | 51 | 61 | 71 | 82 | 92 | 107 | 127 | 142 | 162 | 192 | 218 | 273 | 328 | 378 |
| Ø Di | 22 | 27 | 34 | 43 | 49 | 61 | 77 | 89 | 115 | 141 | 169 | 220 | 273 | 324 |
| b | 2 | 2 | 2 | 2 | 2 | 2 | 2 | 2 | 2 | 2 | 2 | 2 | 2 | 2 |
| Weig. (Kg) | 0.005 | 0.01 | 0.01 | 0.01 | 0.015 | 0.02 | 0.03 | 0.03 | 0.03 | 0.065 | 0.065 | 0.085 | 0.12 | 0.135 |

FLANGES AND FLANGE GASKETS**STANDARDS :**

- Fabrication according to ISO 9000
- Designing according to EN 1092-1

ADVICE :Our opinion and our advice are not guaranteed and Lauridsen Industri shall not be liable for the consequences of damages.