

The ESM 85 solenoid valve is a 2/2 piloted valve dedicated to the shut off of clean and non-aggressive fluids. The operation way is normally closed. The standard construction includes quality brass body and cover, internal parts in stainless steel and diaphragm is NBR. Operating normally closed with 0,3 bar minimum differential pressure.



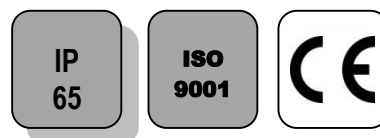
ESM85 : G 3/8" to G 1"

Diaphragm : NBR

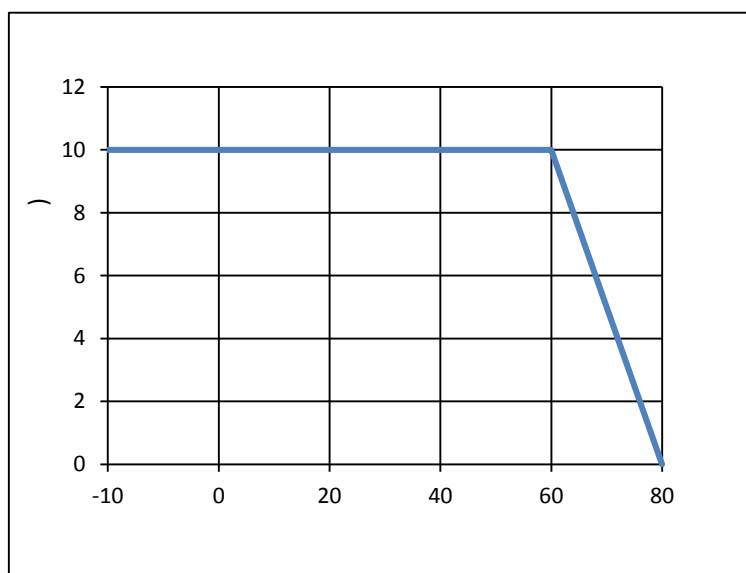
Voltages: See on page 3.

BSP Screwed end connections.

	IP 65
	0 - 10 bar
	+80°C
	-10°C / +80°C



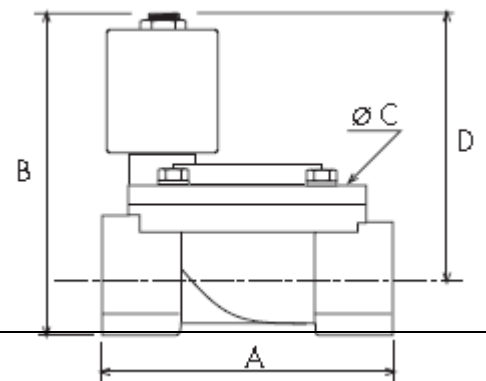
* in direct current, over 40°C, the maximum differential Pressure can be reduced.



Modifications reserved

Pressure Equipement Directive CE 97/23	3/8" à 1" : A3 § 3 excluded	Brass materials	EN 1503-4
Low voltage directive CE 73/23	catégory I	BSP thread	ISO 228
Connector	DIN 43650		

G 3/8"	61	73	48	60
G 1/2"	60,5	79,5	48	67
G 3/4"	84	89	54	72,5



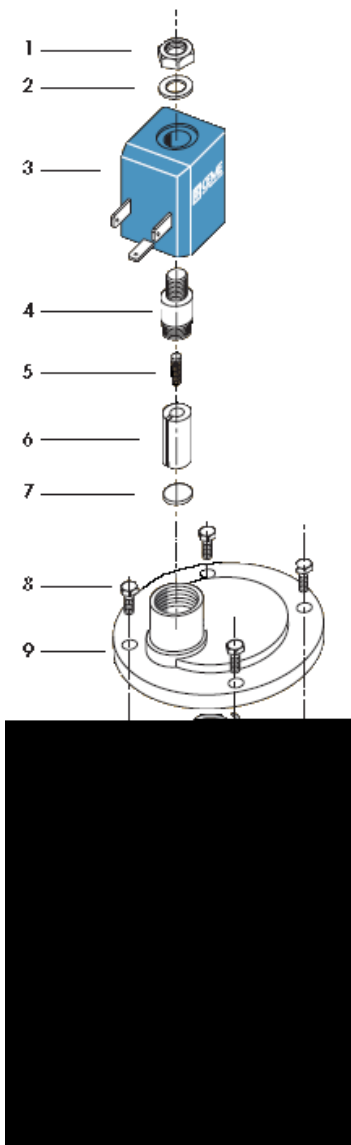
Modifications reserved

G 3/8"	12	1,86	0,3	10	B 4	20-60 ms
G 1/2"	12	2,1	0,3	10		
G 3/4"	20	5,7	0,3	10		
G 1"	25	9,6	0,3	10		

Coil classified F. Duty 100%. Connecting by connector T22.

B 4	AC Coil	24	230	50 Hz	60 Hz	11 VA	14,5 VA
	DC Coil	24				9 W	

	Lock nut	Zincated steel
	Washer	Zincated steel
	Coil	PBT + 30% G.F.
	Tube guide	Stainless steel AISI 300
	Spring	Stainless steel AISI 300
	Plunger	Stainless steel AISI 400
	Seal	NBR
	Screw	Stainless steel
	Cover	Brass CW 617 N
	Spring	Steel
	Diaphragm	NBR
	Bush	Brass
	Body	Brass CW 617 N



Modifications reserved

Installation in every position except horizontal pipe with coil towards the bottom.
Respect the sense of flow indicated by the arrow marked on the body.
For an use on liquids, the installation of a strainer for upstream protection is recommended.
Conform to the assembly instructions supplied with the solenoid valve.

Voltage	230V 50Hz	24V 50Hz	24V cc	T22
Code	980300	980301	980302	980232