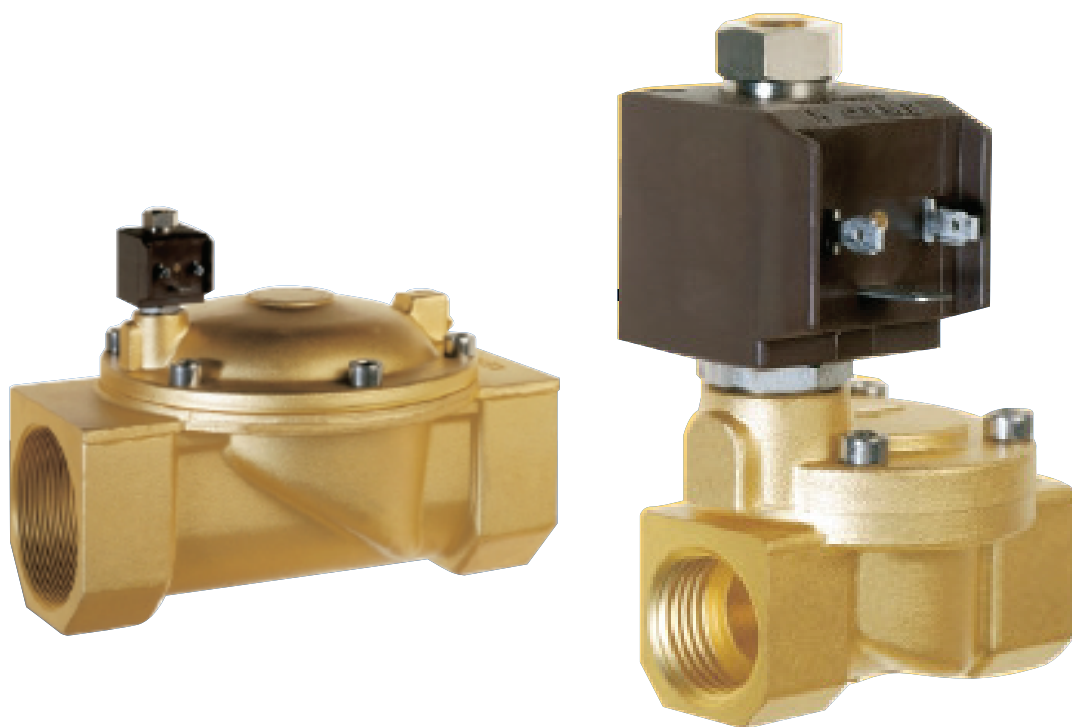




**ELETTROVALVOLA SEVOASSISTITA 2/2 VIE N.A.  
SOLENOID VALVE PILOT OPERATED 2/2 WAY N.O  
SERVOGESTEUERTES MAGNETVENTIL 2/2 WEGE S.O.**

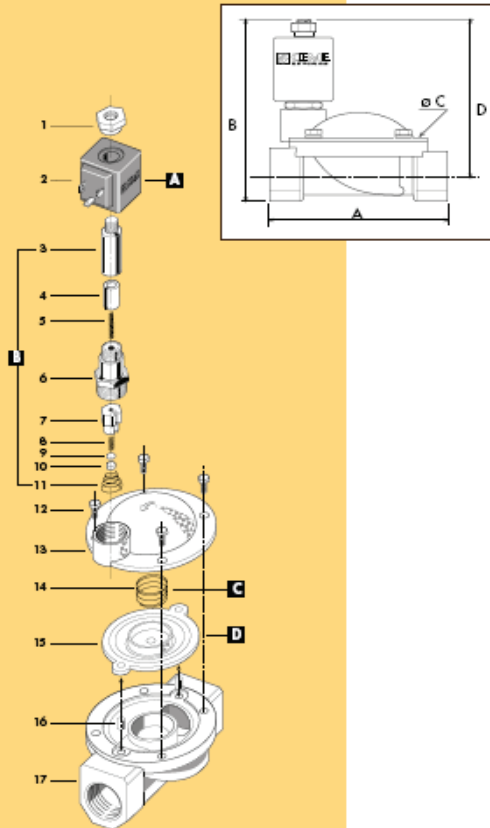
Model/Ref: 087001



*Partnership.  
Without Limits.*

[www.lauridsenindustri.dk](http://www.lauridsenindustri.dk)

**ELETTROVALVOLA SEVOASSISTITA 2/2 VIE N.A.**  
**SOLENOID VALVE PILOT OPERATED 2/2 WAY N.O**  
**SERVOGESTEUERTES MAGNETVENTIL 2/2 WEGE S.O.**



1	Dado	Lock nut	Mutter
2	Boltona	Coil	Magnetspule
3	Cannotto	Tubo guide	Piangarnelle
4	Neckso mobile	Pilger	Pilger
5	Molla	Spring	Feder
6	Cannoso-Nucleo fisso	Tubo guide-tubo top	Piangarnelle-Korn
7	Otturatore	Shutter	Verschluss
8	Molla	Spring	Feder
9	Plattina	Support	Schelle
10	Pastiglia	Seal	Dichtring
11	Molla	Spring	Feder
12	Vite	Screw	Schraube
13	Caporcina	Valve body top	Dackel
14	Molla	Spring	Feder
15	Membrana	Diaphragm	Membrane
16	Bussola	Brush	Bürste
17	Corpo	Valve body base	Grundkörper

RICAMBI	SPARE PARTS	ERSATZTEILE
<b>A</b> Bobina	Coil	Magnetspule
<b>B</b> Gruppo pilota	Pilot unit	Verschleissatz komplett
<b>C</b> Molla	Spring	Feder
<b>D</b> Membrana	Diaphragm	Membrane

**CARATTERISTICHE SPECIFICATIONS**

ATTACCHI PIPES In → out	Ø mm	CODICE CODE	KV m <sup>3</sup> /h	M.O.P.D. bar		DIMENSIONI/DIMENSIONS mm				PESO/WEIGHT Kg
				AC	DC	A	B	C	D	
3/8"	10	8713	1.86	10	10	61	95	48	83	0.600
1/2"	12	8714	2.10	10	10	61	95	48	83	0.550
3/4"	20	8715	5.70	10	10	87	107	69	91	0.850
1"	25	8716	9.60	10	10	100	113	80	93	1.100
1" 1/4	32	8717	22.00	10	10	131	128	112	101	2.700
1" 1/2	39	8718	27.00	10	10	146	135	128	105	3.000
2"	51	8719	35.00	10	10	174	151	146	114	4.500
2" 1/2	65	8720	63.00	10	10	245	186	184	140	9.500
3"	75	8721	83.00	10	10	250	196	184	145	11.230
3/8"NPT	12	8723	2.10	10	10	61	95	48	83	0.600
1/2"NPT	12	8724	2.10	10	10	61	95	48	83	0.560
3/4"NPT	20	8725	5.70	10	10	87	107	69	91	0.850
1"NPT	25	8726	9.60	10	10	108	113	80	93	1.130

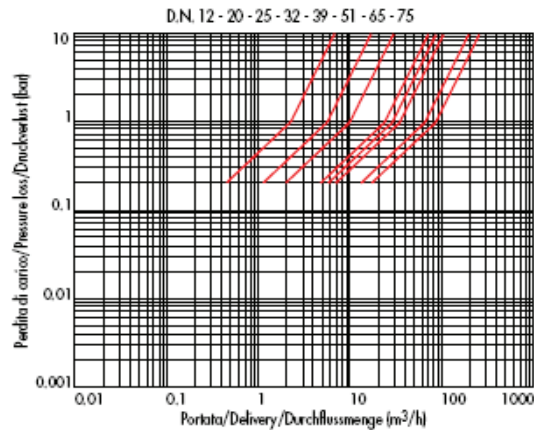
**CARATTERISTICHE ELETTRICHE  
ELECTRICAL INFORMATION**

V~	12	24	48	110	230	400	50	60	Hz	POTENZA/POWER	
										NOMINALE NOMINALE	SPUNTO IN-RUSH
V~	12	24	48	110	230	400	50	60	Hz	15VA	25VA
V=	12	24	48	110						16W	

Per dettagli costruttivi sulle bobine vedi capitolo "INFORMAZIONI DI PROGETTO"  
 For construction details of the coils see chapter "PROJECT INFORMATION"  
 Ausführliche Daten über die Ventilsolenen finden Sie unter Abschnitt "TECHNISCHE  
 INFORMATIONEN"

**MAX TEMPERATURA MAX TEMPERATURE**

FLUIDI/FLUIDS				AMBIENTE/AMBIENT
NBR	EPDM	EPDM-KTW	FPM	80°C
90°C	130°C	130°C	150°C	

**DIAGRAMMA PERDITA DI CARICO PRESSURE LOSS DIAGRAM**

**serie 87**

44

**ELETTROVALVOLA SEVOASSISTITA 2/2 VIE N.A.  
 SOLENOID VALVE PILOT OPERATED 2/2 WAY N.O  
 SERVOGESTEUERTES MAGNETVENTIL 2/2 WEGE S.O.**



**I CARATTERISTICHE GENERALI**  
 PRESSIONE MINIMA DIFFERENZIALE DI FUNZIONAMENTO 0,3 bar

**PARTI A CONTATTO CON IL FLUIDO**

<b>TENUTA</b>	NBR a richiesta FPM, EPDM EPDM-KTW tenuta adatta e certificata DWG per l'intercettazione di acqua potabile
<b>CORPO</b>	OTTONE
<b>ORGANI INTERNI</b>	ACCIAIO INOX
<b>FLUIDI</b>	ACQUA - ARIA - OLII LEGGERI
<b>VALVOLA UNIDIREZIONALE</b>	
<b>VALVOLA ISPEZIONABILE</b>	
<b>VALVOLA FORNITA CON</b>	CONNETTORE TRIPOLARE UNI ISO 4400 (DIN 43650A)-IP 65
<b>POSIZIONE DI MONTAGGIO</b>	Qualsiasi; sconsigliata quella con bobina rivolta verso il basso
<b>TEMPERATURA AMBIENTE</b>	80°C, in D.C. per temperature superiori a 40°C, le performance (M.O.P.D.) potrebbero diminuire

**ESECUZIONI SPECIALI** VERSIONE ANTI COLPO D'ARIETE CON TEMPO DI CHIUSURA PIU' LENTO  
 VERSIONE CON MEMBRANA RINFORZATA X UTILIZZO AD ALTA PRESSIONE E ALTA FREQUENZA DI INTERVENTO (DISPONIBILE X MODELLI 8715 - 8716 - 8717 - 8718 - 8719)

**UK GENERAL FEATURES**  
 MINIMUM WORKING PRESSURE 0,3 bar

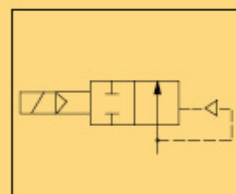
<b>PARTS IN CONTACT WITH THE FLUID</b>	NBR, on request FPM - EPDM EPDM - KTW sealing approved and sealing approved and DWG certified for interception of potable water
<b>SEALING</b>	BRASS
<b>BODY</b>	STAINLESS STEEL
<b>INTERNAL PARTS</b>	WATER - AIR - LIGHT OILS
<b>FLUIDS</b>	
<b>ONE WAY DIRECTION VALVE</b>	
<b>SERVICEABLE VALVE</b>	
<b>VALVE SUPPLIED WITH</b>	THREE POLE PLUG CONNECTOR UNI ISO 4400(DIN 43650A)-IP65
<b>MOUNTING POSITION</b>	Any, the position with the coil downwards is not recommended.
<b>AMBIENT TEMPERATURE</b>	80°C, in D.C. for temperatures higher than 40°C, the performances (M.O.P.D.) could decrease.

**SPECIAL EXECUTIONS** -VERSION WITH WATER HAMMER DEVICE FOR SLOWER CLOSING TIME  
 -VERSION WITH REINFORCED DIAPHRAGM FOR HIGH PRESSURE USE AND HIGH FREQUENCY APPLICATIONS (AVAILABLE FOR MODELS 8715-8716-8717-8718-8719)

**D ALLGEMEINE MERKMALE**  
 MINIMALER ARBEITSDRUCK 0,3 bar

<b>MEDIUMS BERUEHRTE ELEMENTE</b>	NBR, auf Nachfrage FPM -EPDM EPDM - KTW Dichtung DWG-KTW zertifiziert fuer den Trinkwassereinsatz.
<b>DICHTUNG</b>	MESSING
<b>KOERPER</b>	EDELSTAHL
<b>INNERE ELEMENTE</b>	WASSER - LUFT - LEICHTE OELE
<b>MEDIEN</b>	
<b>UNIDIREKTIONALES VENTIL</b>	
<b>VENTIL WARTUNGSFREUNDLICH</b>	
<b>LIEFERUMFANG</b>	DREIPOLIGER STECKER UNI ISO 4400 (DIN 43650A) -IP65
<b>MONTAGEPOSITION</b>	Keine Einschränkungen. Fuer Montage mit dem Spulenkopf senkrecht nach unten, auf Anfrage.
<b>UMGEBUNGSTEMPERATUR</b>	80°C, im D.C.- Betrieb koennen Temperaturen ueber 40°C, die Schaltkraefte (M.O.P.D.) des Ventils beeintraechtigen.

**SONDERAUSFUEHRUNGEN** -ERSION LANGSAM SCHLIESSEND  
 -VERSION MIT VERSTAERKTER MEMBRANE FUER DEN EINSATZ MIT HOHEN DRUECKEN UND HOHER SCHALTHAEUFUEHREIT (VERFUEGBAR FUER MODELLE 8715-8716-8717-8718-8719)



**BOBINA TIPO B6 NA**  
**COIL TYPE B6 NA**  
**SPULE TYP B6 NA**

**serie 87**