

# DIRECT ACTING SOLENOID VALVE CEME 2/2 EST 93 NF

## MAIN CHARACTERISTICS

The EST 93 is a direct acting 2/2 solenoid valve intended for the shut-off of the networks of common fluids such as water, air, neutral gases, vapor and gas oil. Normally closed operating. The standard construction is with brass body and stainless steel internal parts. The seat is in FPM. This valve is operating with no there minimum differential pressure.

## AVAILABLE MODELS

EST 93 : G 1/4" to G 1/2"

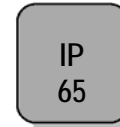
Voltages: See on page3.

BSP Screwed end connections.



## LIMITS OF USE

Electric protection	IP 65		
Max allowed fluid pressure : PS	1/4"	3/8"	1/2"
Current AC Coil :	15 (bar)	15 (bar)	5 (bar)
Current DC Coil :	7 (bar)	7 (bar)	3 (bar)
Max allowed fluid temperature : TS	150°C		
Room temperature *:	-10°C / +80°C		



\* in direct current, over 40°C, the maximum differentiel Pressure can be reduced.

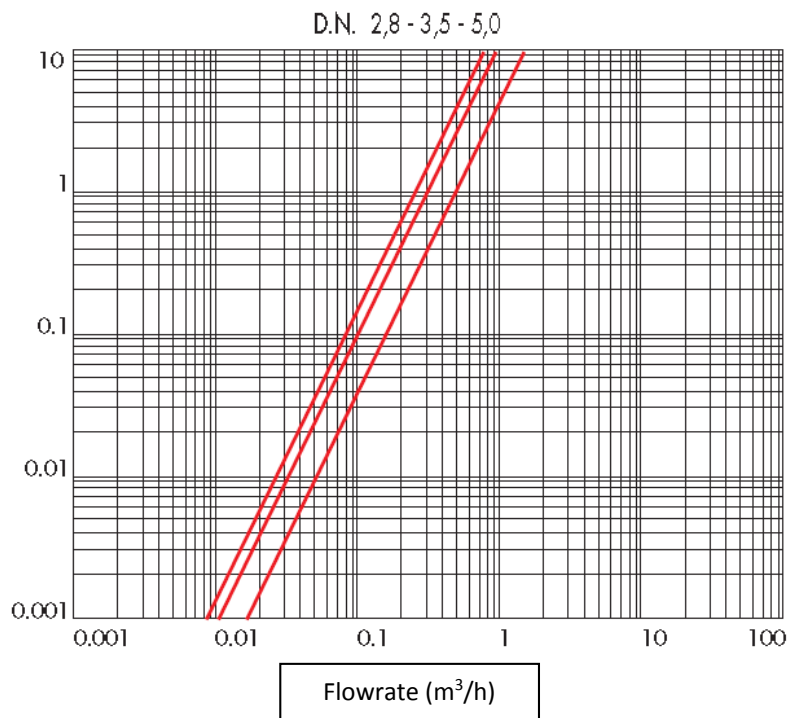
## REGULATIONS AND STANDARD OF CONSTRUCTION

Item	Standard	Item	Standard
Pressure Equipment Directive CE 97/23	1/4" to 1/2" : A3 § 3 excluded	Brass materials	EN 1503-4
Low voltage directive CE 73/23	category I	BSP thread	ISO 228
Connector	DIN 43650		

Modifications reserved

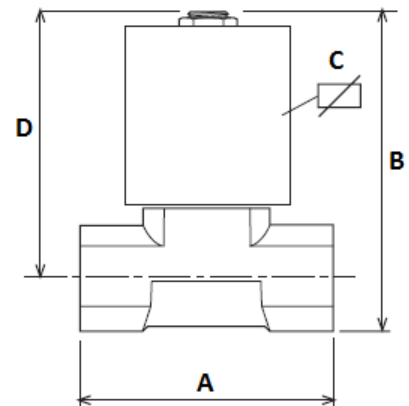
# DIRECT ACTING SOLENOID VALVE CEME 2/2 EST 93 NF

## PRESSURE LOSS DIAGRAM (BAR)



## DIMENSIONS (mm) AND WEIGHT (kg)

DN	A	B	C	D	Weight (Kg)
G 1/4"	42	69	60	60	0,4
G 3/8"	47	73	60	62	0,45
G 1/2"	56	76	60	63	0,5



## HYDRAULICS CHARACTERISTICS

DN	Port (mm)	Kv (m <sup>3</sup> /h)	Max Diff. AC. Pressure (bar)	Max Diff. DC. Pressure (bar)	Coil	Operating time (s)
G 1/4"	3,5	0,27	15	4	B12	20-60 ms
G 3/8"	3,5	0,30	15	4		
G 1/2"	5,0	0,48	4,5	1		

Modifications reserved

# DIRECT ACTING SOLENOID VALVE CEME 2/2 EST 93 NF

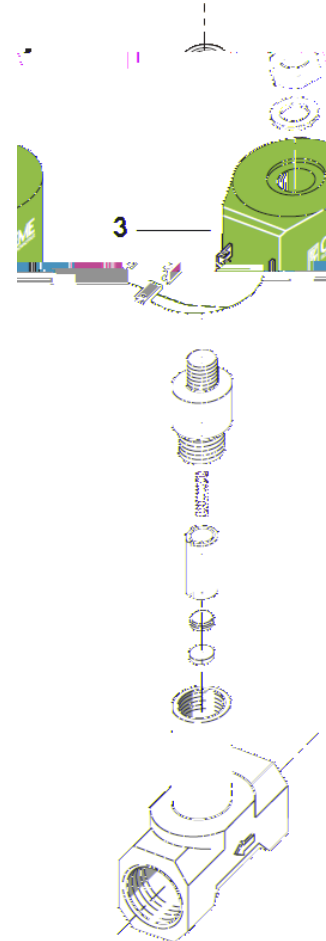
## ELECTRIC CHARACTERISTICS

Coil classified F. Duty 100%. Connecting by connector T30.

Coil	Current	Available voltages (V)						Frequency		Power consumption	
		12	24	48	110	230	400	50 Hz	60 Hz	Holding	Rush
B 12	AC Coil	12	24	48	110	230	400	50 Hz	60 Hz	27 VA	38 VA
	DC Coil	12	24	48	110					14 W	

## CONSTRUCTION

N°	Item	Material
1	Lock nut	Zincated steel
2	Washer	Zincated steel
3	Coil	PBT + 30% G.F
4	Tube guide	Stainless steel AISI 430
5	Spring	Stainless steel AISI 430
6	Plunger	Stainless steel AISI 303
7	Disc	Stainless steel
8	Seat	FPM
9	Body	Brass CW 617 N



## MOUNTING

Installation in every position except horizontal pipe with coil towards the bottom.  
Respect the sense of flow indicated by the arrow marked on the body.  
Conform to the assembly instructions supplied with the solenoid valve.

## SPARE PARTS

B12 Coil type (Number 3)							Connector
Voltage	230V 50Hz	24V 50Hz	12V 50Hz	48V 50Hz	110V 50Hz	380V 50Hz	T30 980696
Code	980410	980411	980412	980413	980414	980419	
Voltage	12V cc	24V cc	110V cc				
Code	980415	980416	980417				

Modifications reserved