

# 248 HP NC PILOT OPERATED 2/2 SOLENOID VALVE

## FEATURES

The 248 HP solenoid valve is a pilot operated 2/2 solenoid valve with a piston, intended for the automatic shut-off of networks of high-pressure fluids, up to 40 bar. It is suitable for clear, not-charged fluids, such as water, air and neutral gases. The body is of brass, and the internal parts of stainless steel, with a BNR seat liner on the disc. Normally closed operation, with a minimum differential pressure of 1.5 bar. Mounting on horizontal piping, coil on top.

## AVAILABLE MODELS

**248HP:** G 3/8" to G 2"

**Diaphragms:** NBR, **option:** FPM.

**Voltages:** See page 3.

G thread connections

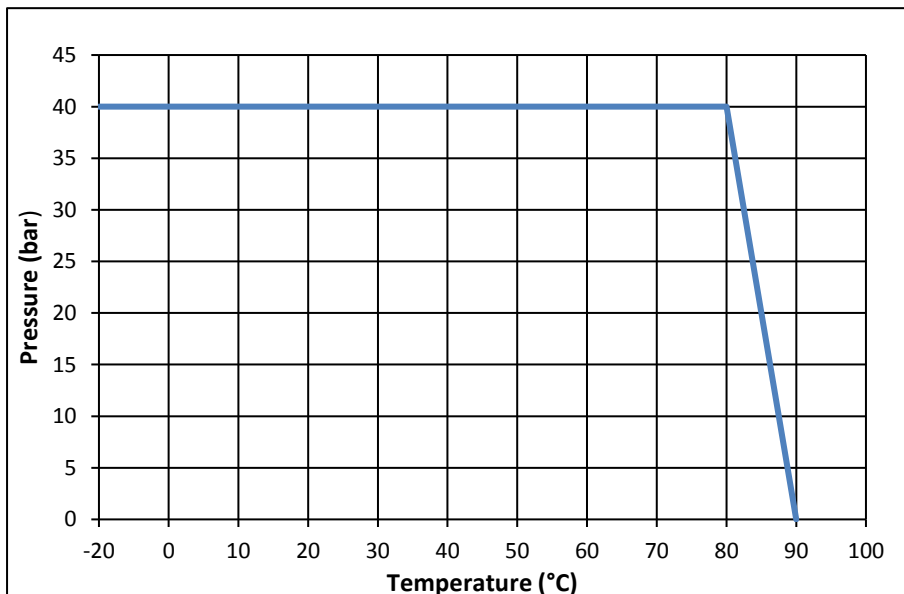


## LIMITS OF USE

<b>Fluid</b>	Non-hazardous, category 2
<b>Electrical protection</b>	IP 65
<b>Fluid WP:</b>	1.5 - 40 bar
<b>Fluid WT°:</b>	NBR -20°C / +90°C
<b>Ambient WT°*:</b>	-20°C / +50°C



\* under DC, above 40°C, the maximum differential pressure can be reduced.



Information given as an indication only, and subject to possible modifications

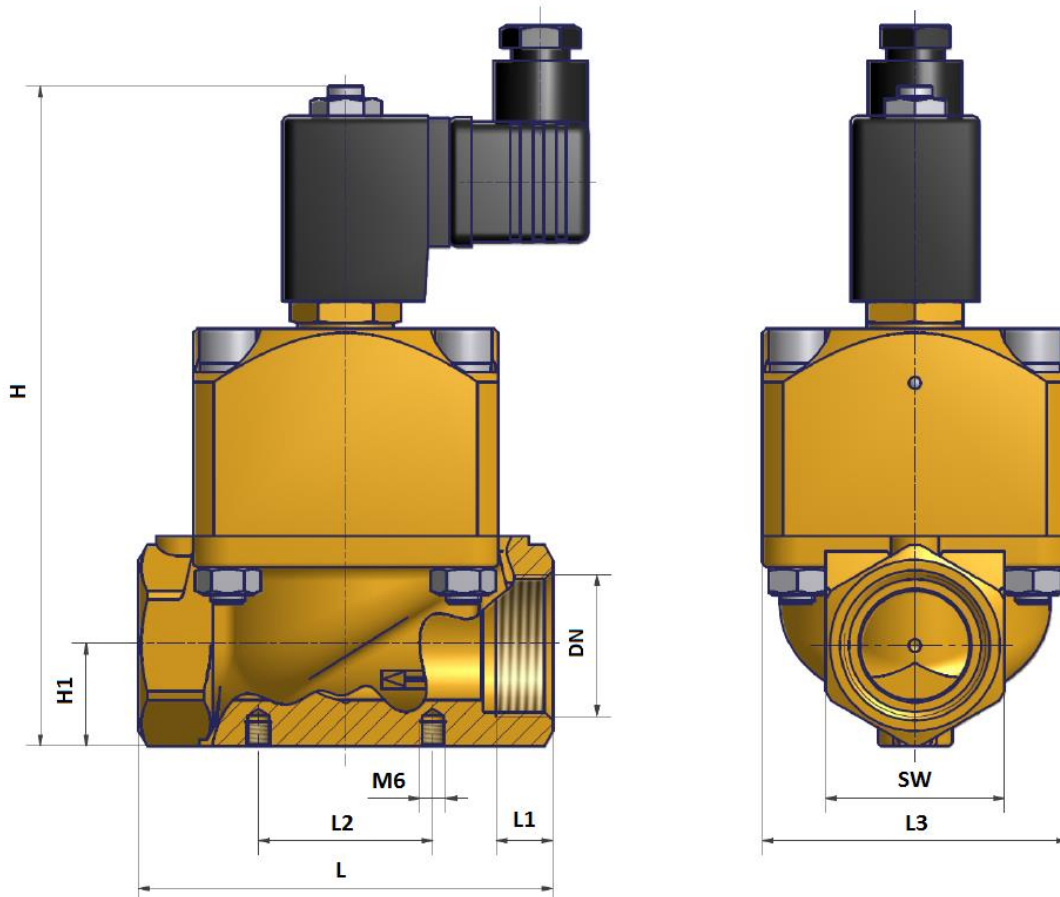
# 248 HP NC PILOT OPERATED 2/2 SOLENOID VALVE

## DIRECTIVES AND MANUFACTURING STANDARDS

OBJECT	Standard	OBJECT	Standard
Pressure Equipment Directive 97/23/EC	A3 § 3 non-submitted	Brass grade	EN 1503-4
Low voltage directive 73/23/EC	category I	Threaded connection	ISO 228
Connector	DIN 43650		

## DIMENSIONS (mm) AND WEIGHT (kg)

DN	SW (mm)	H (mm)	H1 (mm)	L (mm)	L1 (mm)	L2 (mm)	L3 (mm)	Weight (kg)
G 3/8"	27	130	15	67	14	-	50	2.0
G 1/2"	27	130	15	67	14	-	50	2.5
G 3/4"	41	155	25	95	16	40	70	2.8
G 1"	41	155	25	95	16	40	70	3.0
G 1" 1/4	60	180	30	132	18	55	96	3.4
G 1" 1/2	60	180	30	132	18	55	96	3.8
G 2"	70	205	40	160	25	-	112	4.0



Information given as an indication only, and subject to possible modifications

# 248 HP NC PILOT OPERATED 2/2 SOLENOID VALVE

## HYDRAULIC FEATURES

DN	Orifice size (mm)	Kv (m <sup>3</sup> /h)	Min pressure diff. (bar)	Max pressure diff. (bar)
G 3/8"	13	1.9	1.5	40
G 1/2"	13	2.0	1.5	40
G 3/4"	20	5.0	1.5	40
G 1"	25	5.5	1.5	40
G 1" 1/4	32	10.0	1.5	40
G 1" 1/2	40	14.0	1.5	40
G 2"	50	20.0	1.5	40

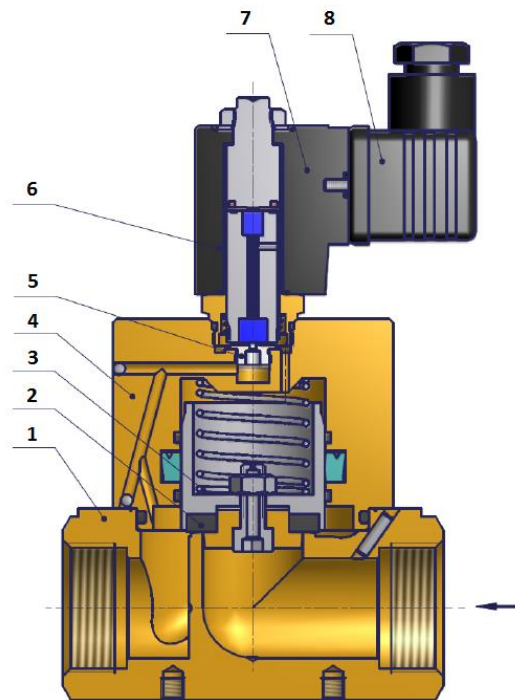
## ELECTRICAL FEATURES

100% operation Connection through a T30 connector.

Current	Available voltages (V)	Frequencies	Consumption	
			holding	inrush
alternate	230	50 Hz	15VA	-
direct	24		15W	-

## CONSTRUCTION

No.	Name	Material
1	Body	EN CW 617 N brass
2	Gasket	NBR
3	Piston	Stainless steel
4	Cover	EN CW 617 N brass
5	Mobile core	Magnetic steel
6	Guide tube	Stainless steel
7	Coil	PBT
8	Connector	Plastic



Information given as an indication only, and subject to possible modifications

# 248 HP NC PILOT OPERATED 2/2 SOLENOID VALVE

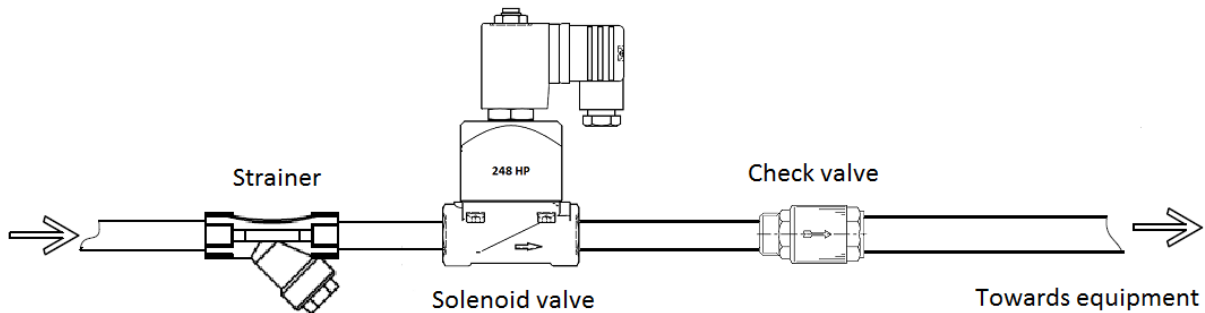
## INSTALLATION

Can be installed in any position except for horizontal, coil head downwards.  
Follow the flow direction indicated by the arrow shown on the body.  
To use with liquids, it is recommended to install a upstream protective filter.

### Check-valve :

A solenoid valve cannot be used as a check-valve. A de-energized normally closed solenoid valve can be crossed by a downstream counterflow. If a both side tightness is required, please add a check-valve downstream of the solenoid valve.

### Example



### Scaling :

A solenoid valve used on hard water and kept energized during long period can face scaling problem that can block the operation. For this kind of application, please consult.



Conform also to the assembly instructions supplied with the solenoid valve.

## OPTIONS

- NO (normally open) 248HF solenoid valve
- LED connector
- ATEX version: II 2G Ex m II T4 and II 3D IP65 T130°C.

Information given as an indication only, and subject to possible modifications