



## CAST IRON SIGHT GLASS C164

Model/Ref: 2225015



*Partnership.  
Without Limits.*

## CAST IRON SIGHT GLASS C164

### MAIN CHARACTERISTICS

The C 164 sight glass is dedicated to the visual control of flow in pipes. Built cast iron, the C 164 is mainly used for low and medium pressure applications. The C 164 has a double windows construction and is fitted with baffles allowing turbulences that improve the visibility of the flow.

### AVAILABLE MODELS

Sizes DN15 to DN250

Flanged RF PN16 connections



### CLASSIFICATION ACCORDING TO PED 97/23

Category II : homologation CE 1115

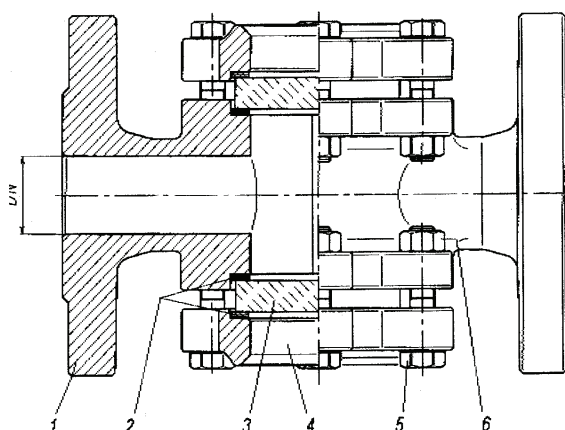
### LIMITS OF USE

PS : 16 bar

TS : +5°C / +180°C

### CONSTRUCTION

Item	Description	Material
1	Body	Cast iron EN-JGL 250
2	Glass gasket	Fiber
3	Glass	Tempered glass
4	Cover	Cast iron EN-JGL 250
5	Screws	Carbon steel
6	Nuts	Carbon steel



## CAST IRON SIGHT GLASS C164

### DIMENSIONS (mm)

DN	15	20	25	32	40	50	65	80	100	125	150	200	250
B	14	14	14	18	18	18	18	18	18	18	22	22	25
A	65	75	85	00	110	125	145	160	180	210	240	295	355
H	105	106	110	132	140	150	190	210	245	315	340	415	450
F	95	105	115	140	150	165	185	200	220	250	285	340	405
L	130	150	160	180	200	230	290	310	350	400	480	600	730

### INSTALLING AND MAINTAINING

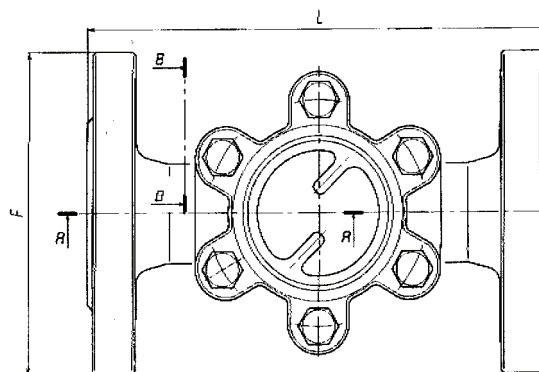
- Before installation or maintaining, shut off the line using upstream and downstream valves.
- Remove the pressure inside and drain the pipe.
- If the pipe is warm, wait the complete cooling to room temperature.
- Wear protections equipments adapted to this kind of operation (gloves and glasses).

#### Installing

- Decide the position of the sight glass on the line in order to make it visible for the operators.
- Install the appropriate flanges gaskets.
- Install the sight glass by screwing the flanges on the pipes ends.

#### Maintaining

- Remove the cover and remove the glass.
- Clean the inner parts of the body.
- Verify the state of the glass and check any starting of chemical corrosion or mechanical erosion. Replace it if necessary.



### SPARE PARTS

Set including 1 glass and 2 gaskets

DN	Ø of the glass (mm)	Thickness (mm)	Reference
15 – 25	59,8	9,8	981018
32 – 40	65,4	11,9	981019
50	80	14,8	981020
65 – 80	109,5	18,7	981021
100			981022